

ECHODECO® EDGE WALL TILES

Price Effective - April 14, 2025



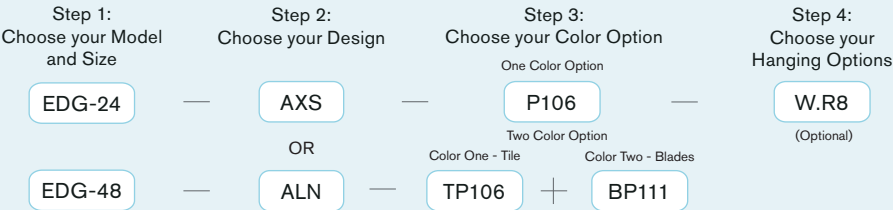
QUIET THAT STANDS OUT.

EchoDeco® Edge Wall Tiles bring depth, dimension, and a modern sculpted look to your walls, all while helping reduce noise and create a more balanced environment. Their three-dimensional profile plays with light and shadow, giving you wall art with purpose.

Designed for efficient coverage and high performance, each EchoDeco® Edge Wall Tile provides up to 22 square feet of noise-control material. Choose from 3 distinctive design styles and 26 color options, giving you the freedom to shape a space that's calm, creative, and uniquely yours.

- Tile dimensions 23.5" or 47" square
- Three 3-dimension design options
- Acoustic Edge Tiles are available in 1 or 2 color options
- Tile thickness – 3/8" (9mm) with an NC rating of 0.85
- Edge Wall Tiles can be installed using adhesive mounts or with permanent adhesive
- Made in the USA

How to build your SKU:



ECHODECO® EDGE WALL TILES

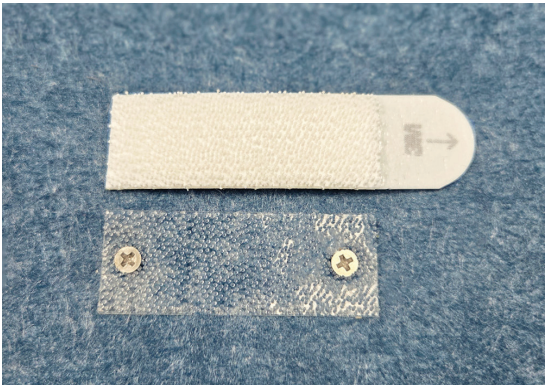
	Model	Fixed Size	Design	Color Options			Hanging Options (Optional)
				One Color		Two Colors	
EDG-24	EchoDeco® Edge Wall Tiles	23.5"W x 23.5"L	AXS Axis	P1_ EchoScape™	TP1_ Tile Color	+ BP1_ Blade Color	W.R_ Adhesive Removable Mount
EDG-48	EchoDeco® Edge Wall Tiles	47"W x 47"L	ALN Align STC Static	3/8" (9mm)	EchoScape™	EchoScape™	

ECHODECO® EDGE WALL TILES - QTY 1
MATERIAL THICKNESS 3/8" (9MM)
(EDG)

Design	Width	Length	Weight (lbs)	Edge Wall Tiles* Qty 1 (one or two colors) List Price	Adhesive Removable Mount WR.8 = 8 Sets WR.20 = 20 Sets		Acoustic Sq. Ft.
					W.R8	W.R20	
Axis	23.5"	23.5"	2	\$278	+\$25	N/A	22
Axis	47"	47"	9	\$940	N/A	+\$63	22
Align	47"	47"	9	\$940	N/A	+\$63	22
Static	47"	47"	8	\$650	N/A	+\$63	18

*EchoDeco Edge Wall Tiles may be installed with permanent adhesives - not included
*Recommended carpet adhesive - Roberts™ 3095 or similar
*Recommended construction adhesive - Loctite® Power Grab® All Purpose or Ultimate or similar

MOUNTING OPTION



COMMAND™ STRIP
WALL ADHESIVE

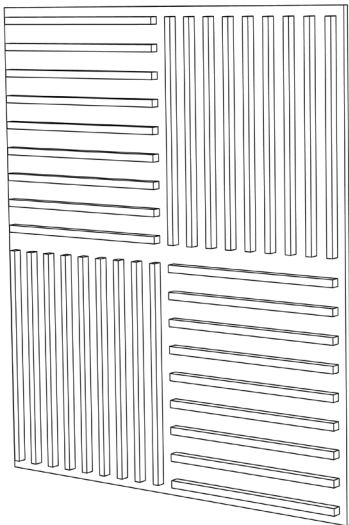
COMMAND™ STRIP WALL ADHESIVE CAN BE USED ON THE FOLLOWING SURFACES: PAINTED, STAINED OR VARNISHED WOOD, GLASS, TILE, PAINTED CINDER BLOCK, PLASTER, METAL, AND PAINTED WALLBOARD.

PRESS LOCK
ADHESIVE STRIP

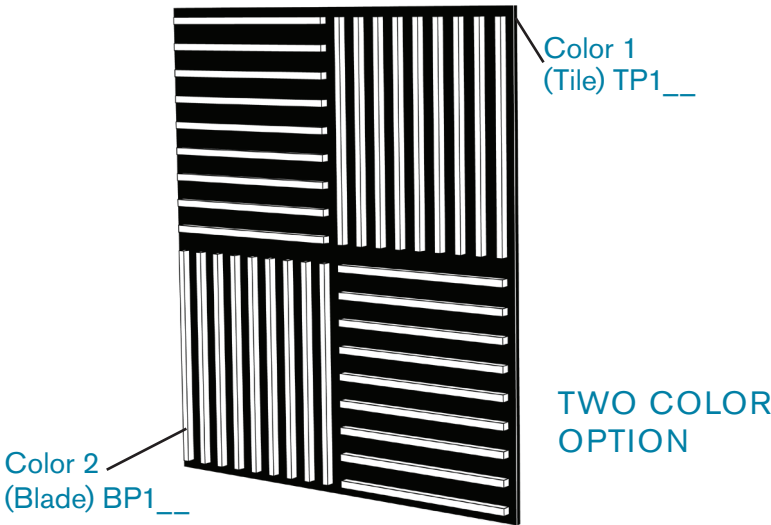
PRESS LOCK ADHESIVE ATTACHES TO PRODUCT WITH ADHESIVE AND TWO SCREWS (SCREW INSTALLATION REQUIRED)

ADHESIVE REMOVABLE MOUNT
(W.R)

COLOR OPTIONS



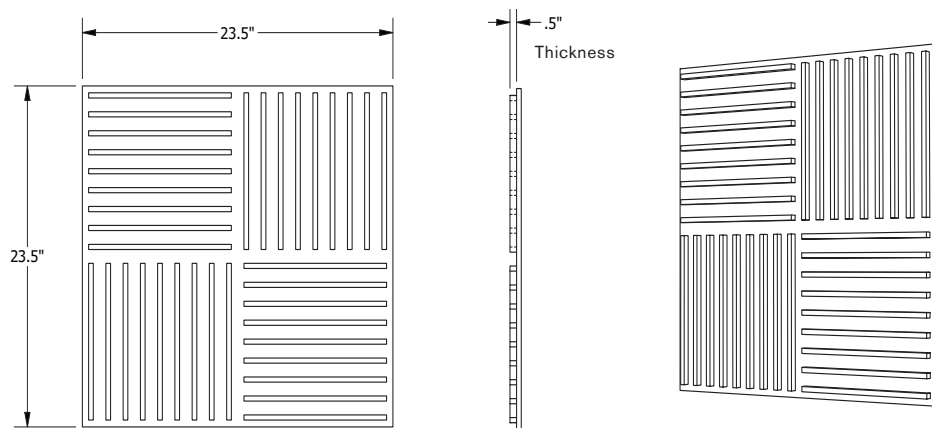
ONE COLOR
OPTION
P1__



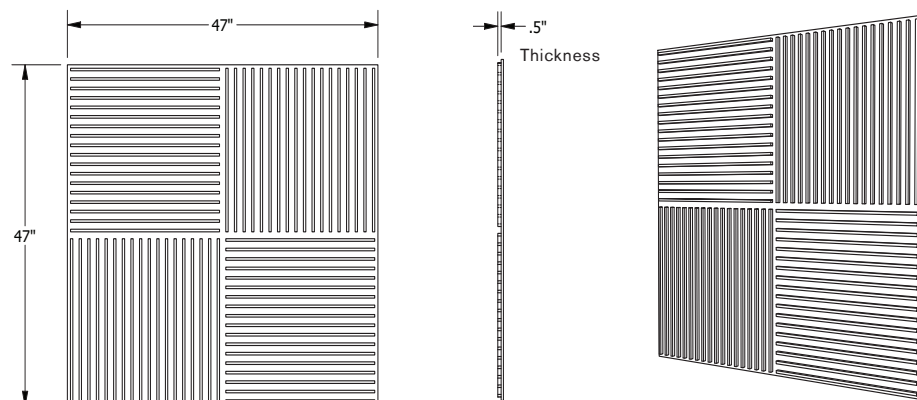
TWO COLOR
OPTION



AXS - 23.5"X23.5" AXIS IN CANVAS P126

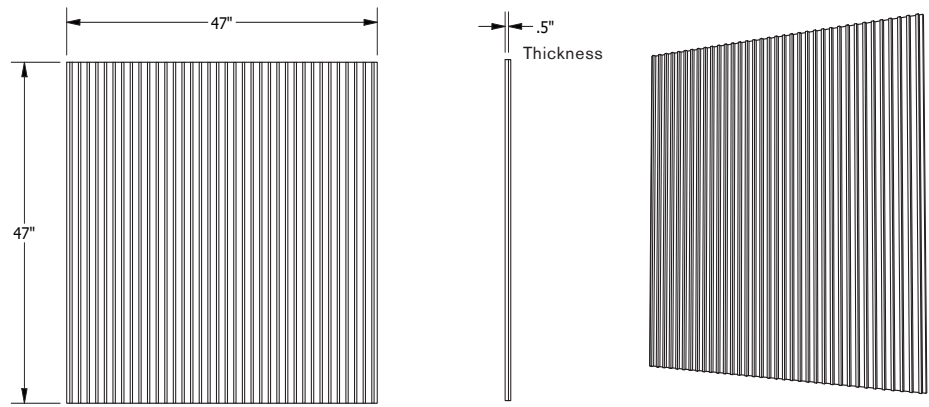


AXS - 47"X47" AXIS IN PARCHMENT P130
& ARCTIC P127

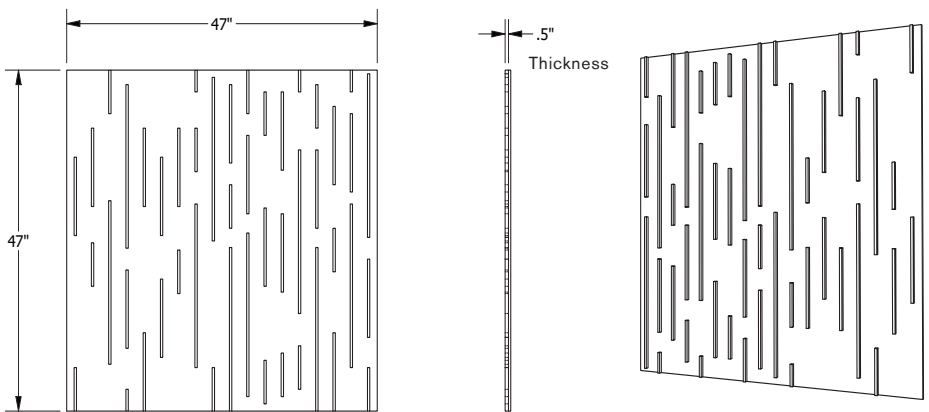




ALN - 47"X47" ALIGN IN SKY P117



STC - 47"X47" STATIC IN ASH P100 & RUBY P108



MATERIAL OPTIONS

ECHOSCAPE™ 3/8" (9MM)

