

# TABLEUP™ HEIGHT ADJUSTABLE BASE - 2 LEGS AND WORKSURFACES

Price Effective - January 1, 2021

## ELECTRIC HEIGHT ADJUSTABLE

TableUP™, our US made height adjustable table bases deliver quality, flexibility, and functionality at an affordable cost. Built to exceed industry standards and configured to meet your budget, TableUP bases are the foundation for a healthy and ergonomic workspace.



- 2-Stage height adjustment range – 27" to 46" (excluding worksurface)
- 3-Stage extended height adjustment range – 21.5" to 47.5" (excluding worksurface)
- Meets California freestanding height adjustable table requirements
- 2-Leg base supports 200lb lifting capacity
- Ergonomically designed to allow for under-mount keyboard drawer installation
- Programmable or up/down hand set available
- Powered by built-in motors in each leg for a smooth and quiet motion
- Lifting and lowering speed - 1.25" per second
- Meets BIFMA X5.5 standards, UL 962 approved
- Base finish options - Silver, Black and White



## WORKSURFACE AVAILABLE SEPARATELY

- Top size: 24" – 30" depth, 36" – 84" width
- High Pressure Laminate (HPL) worksurface with coordinating or solid 3mm edgeband available
- Predrilled grommet hole with coordinating grommet available in various locations on worksurfaces

## TABLEUP™ ELECTRIC HEIGHT ADJUSTABLE BASE - 2 LEGS

How to build your SKU:

Step 1:  
Choose your  
Model

TU2-2

—

Step 2:  
Choose your  
Hand Control

U-T

—

Step 3:  
Choose your  
Base Color

SV

## HEIGHT ADJUSTABLE BASE - 2 LEGS

Model	Handset Control	Base Color
TU2-2 TableUP 2-Stage	U-T Up/Down -Touch	SV Silver
TU2-3 TableUP 3-Stage	P-T Programmable Control	WT White
		BK Black

## HEIGHT ADJUSTABLE BASE - 2 LEGS

Model #	Base	Stage	Hand Set	Weight	List Price
TU2-2U-T	2 Legs	2-Stage	Up/Down Hand Set	45 lbs.	<b>\$839</b>
TU2-2P-T	2 Legs	2-Stage	Programmable Hand Set	45 lbs.	<b>\$909</b>
TU2-3U-T	2 Legs	3-Stage	Up/Down Hand Set	50 lbs.	<b>\$979</b>
TU2-3P-T	2 Legs	3-Stage	Programmable Hand Set	50 lbs.	<b>\$1,049</b>

2-Stage height adjustment range - 27" to 46" and 200lb lifting capacity  
 3-Stage extended height adjustment range - 21.5" to 47.5" and 250lb lifting capacity  
 Meets CA freestanding height adjustment table requirements  
 Pricing in USD



TU2-2 TABLEUP™  
2-STAGE HEIGHT ADJUSTABLE BASE



Up/Down Hand Set



Programmable Hand Set



TU2-3 TABLEUP™  
3-STAGE EXTENDED HEIGHT  
ADJUSTABLE BASE

## WORKSURFACES

MergeWorks' worksurfaces are made from High Pressure Laminate (HPL) with a coordinating or solid color 3mm edge band. Extremely functional, versatile and durable HPL worksurfaces are scratch, water and impact resistant.

### How to build your SKU:

Step 1: Choose your Worksurface	Step 2: Choose your Laminate Color	Step 3: Choose your Edgeband	Step 4: Choose your Grommet Location	Step 5: Choose your Grommet Color	Step 6: Choose your options Anti-Sag Bar
WS-7224	L110	EM	C	GB	HL
					(Recommended for worksurfaces 60" or wider)

## TABLEUP™ WORKSURFACE

Rectangular Worksurface	Laminate Color	Edgeband	Grommet Location	Grommet Color	Recommended Anti-Sag Bar (Optional)
WS-4824 48"w x 24"d	L1 Standard Laminate	EM Matching	N No Grommet	GS Silver	VL V-Channel for worksurfaces 60"-72"
WS-4830 48"w x 30"d	L3 Premium Laminate	EP Multi-plywood	L Left	GB Black	HL Hat-Channel for worksurfaces 72"-84"
WS-5424 54"w x 24"d		ES Silver	C Center	GW White	
WS-5430 54"w x 30"d		EB Black	R Right		
WS-6024 60"w x 24"d		EW White	LC Left & Center		
WS-6030 60"w x 30"d			LR Left & Right		
WS-6624 66"w x 24"d			CR Center & Right		
WS-6630 66"w x 30"d			LCR Left, Center & Right		
WS-7224 72"w x 24"d					
WS-7230 72"w x 30"d					
WS-8424 84"w x 24"d					
WS-8430 84"w x 30"d					

## RECTANGULAR HPL WORKSURFACE

Model #	Size	L100 Laminates	L300 Laminates	Recommended Anti-Sag Bar
WS-4824	48"w x 24"d	\$342	\$420	-
WS-4830	48"w x 30"d	\$363	\$441	-
WS-5424	54"w x 24"d	\$399	\$499	-
WS-5430	54"w x 30"d	\$431	\$531	-
WS-6024	60"w x 24"d	\$415	\$515	VL - \$45
WS-6030	60"w x 30"d	\$447	\$546	VL - \$45
WS-6624	66"w x 24"d	\$473	\$588	VL - \$45
WS-6630	66"w x 30"d	\$504	\$620	VL - \$45
WS-7224	72"w x 24"d	\$489	\$604	HL - \$75
WS-7230	72"w x 30"d	\$520	\$636	HL - \$75
WS-8424	84"w x 24"d	\$746	\$940	HL - \$75
WS-8430	84"w x 30"d	\$783	\$977	HL - \$75

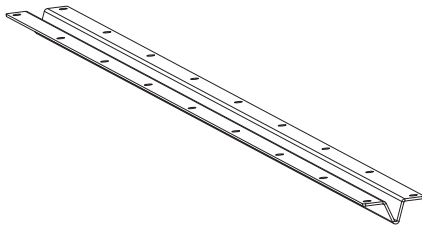


TU2-2 TABLEUP™ 2-STAGE HEIGHT ADJUSTABLE WITH WORKSURFACE



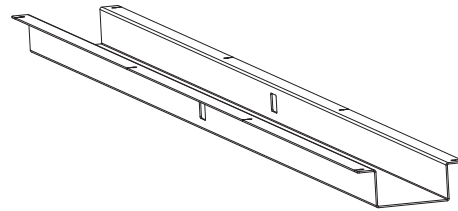
TU2-3 TABLEUP™ 3-STAGE EXTENDED HEIGHT ADJUSTABLE WITH WORKSURFACE

## ANTI-SAG BARS



VL - \$45

V-channel for 60"-66" wide worksurfaces

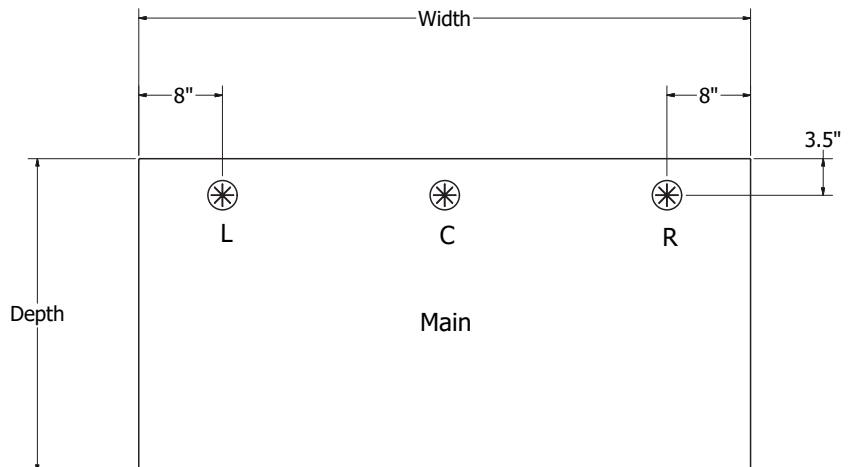


HL - \$75

Hat channel for 72"-84" wide worksurfaces

## GROMMET LOCATION

Model #	Location & Qty	Price
N	No Grommet	\$0
L	Left (1)	\$25
C	Center (1)	\$25
R	Right (1)	\$25
LC	Left & Center (2)	\$50
LR	Left & Right (2)	\$50
CR	Center & Right (2)	\$50
LCR	Left, Center & Right (3)	\$75



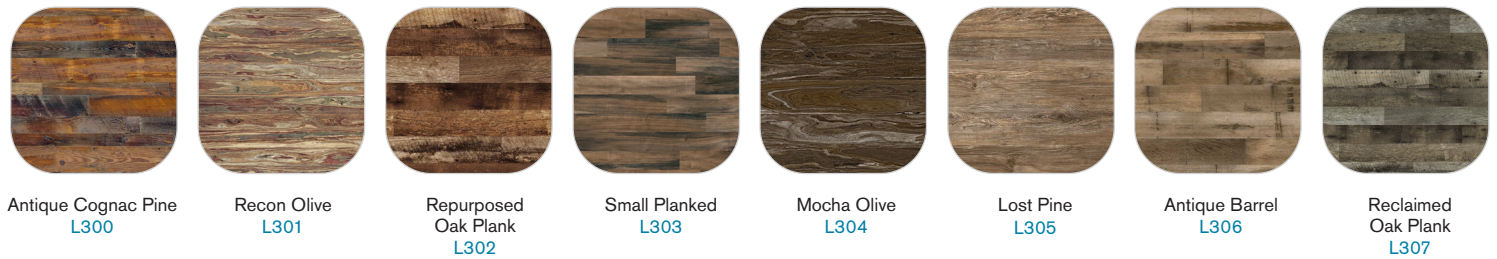
Pricing in USD

GROMMET LOCATIONS

## LAMINATES AND WOODGRAINS HPL SERIES 100 (L1\_)



## LAMINATES AND WOODGRAINS HPL SERIES 300 (L3\_)



## BASE FINISHES, GROMMET FINISHES, EDGE BAND FINISHES

