

ENCLAVE™ PRIVACY PLUS

Price Effective - January 1, 2021



Social Distancing Partitions

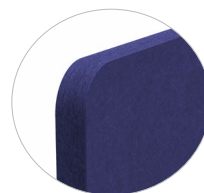
Provide protection and comply with social distancing standards with our Enclave™ Privacy Plus wing panels. Privacy Plus panels not only cover the length of your countertop or desk, they extend 8 inches past the surface for extra barrier protection.

MergeWorks' Privacy Plus divider wing panels can be easily added to existing furniture using a variety of removable and permanent mounting options. Manufactured in several materials that can be cleaned and disinfected, and quick to install, Privacy Plus Wings are an effective solution to safeguard everyone in your business.

- Panels extend 8 inches past desk or countertop surfaces for added barrier protection
- Available in several widths and heights for maximum coverage
- Available in materials that can be cleaned and disinfected including Acrylic, Acoustic EchoScape™
- EchoScape™ 3/4" (18mm), our 0.9 NRC rated acoustic solution, effectively controls noise disruptions by absorbing sound
- Permanent and removeable mounting options available
- Made in the USA
- Customization available – special materials, sizes, shapes and mounting options



FROSTED ACRYLIC
(Style FRO)
CLEAR ACRYLIC
(Style CLR)



ECHOSCAPE™
(Style PE18 and IPE18)

How to build your SKU:

Step 1:
Choose your Model

FADP8

Step 2:
Choose your Style

PE18

Step 3:
Choose your Width

23

Choose your Height

12

Step 4:
Choose your Material Color

P101

Step 5:
Banner Cutout Design (optional)
(PE18 and IPE18 Styles only)

D004

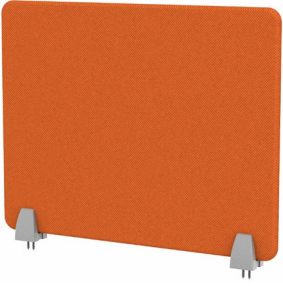
Step 6:
Choose your Mounting Option

SCEK

ENCLAVE™ PRIVACY PLUS

Model	Style	Width	Height	Material Color	Banner Cutout Designs (optional) (PE18 and IPE18 Styles only)	Mounting	
FADP8 Enclave™ Privacy Plus Panel	FRO Frosted Acrylic	17"	12"	P100 Ash EchoScape™ 3/4" (18mm)	D002 Fizzy	*TM Top Mount (silver or black)	
	CLR Clear Acrylic	23"	16"	P101 Charcoal EchoScape™ 3/4" (18mm)	D004 Metro	STW.R Tower Adhesive Mount (silver)	
	PE18 EchoScape™	29"	18"	P102 Cobalt EchoScape™ 3/4" (18mm)	D005 Dash	*CEK Edge Clamp - Knob (silver or black)	
	IPE18 EchoScape™ Invisible Mount				P103 Pear EchoScape™ 3/4" (18mm)	D008 Tribal	*CEL Edge Clamp - Lever (silver or black)
					P104 Sandstone EchoScape™ 3/4" (18mm)	D016 Retro	*SCEH Edge Clamp - Hex (silver)
					P105 Slate EchoScape™ 3/4" (18mm)	D017 Strata	SCMS Middle Clamp (silver)
					P106 Iced Grey EchoScape™ 3/4" (18mm)	D021 Maze	SCMD Middle Clamp - Double (silver)
P107 Linen EchoScape™ 3/4" (18mm)	D022 Aztec	SCMKS Middle Clamp - Knob (silver)					
				D023 Pinwheel	SFS Free Standing (silver)	IM Invisible Mount	
						IM.R Invisible Adhesive Mount	

MOUNTING OPTIONS



Top Mount (TM)

- Use for permanent mounting
- Install anywhere on the desk
- Work on all thickness tops
- Clamp position on panel is adjustable
- Kits include 2 or 3 Top Mounts depending on the width of the desk divider



Top Mount (STM)



Top Mount (BTM)

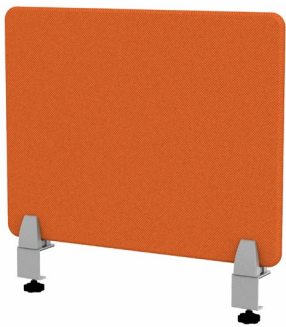


Tower Adhesive Mount (STW.R)

- For use with Clear & Frosted Acrylic
- Adhesive strips are used to attach metal plate to worksurface
- Aluminum cover snaps into metal plate and Tower Mount is screwed into cover
- Clamp position on panel is adjustable
- Kits include 2 or 3 Tower Mounts depending on width of panel



Tower Adhesive Mount (STW.R)



Edge Clamp - Knob (CEK)

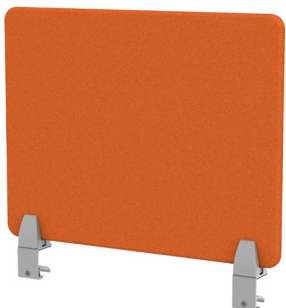
- Fast & easy installation and relocation
- Mount along the edge of work surface
- Clamp fits 3/4" to 2" thick tops
- No screwing or drilling into work surface required
- Clamp position on panel is adjustable
- Kits include 2 or 3 Clamps depending on the width of the desk divider



Edge Clamp - Knob (SCEK)



Edge Clamp - Knob (BCEK)



Edge Clamp - Lever (CEL)

- Patented Lever allows for easy installation with no low hanging knob
- Fast & easy installation and relocation
- Mount along the edge of work surface
- Clamp fits 5/8" to 2" thick tops
- No screwing or drilling into work surface required
- Clamp position on panel is adjustable
- Kits include 2 or 3 Clamps depending on the width of the desk divider

*Patented



Edge Clamp - Lever (SCEL)



Edge Clamp - Lever (BCEL)



Edge Clamp - Hex (CEH) (Low Profile)

- Fast & easy installation and relocation
- Mount along the edge of work surface
- Clamp fits 1.1" to 1.22" thick tops
- No screwing or drilling into work surface required
- Clamp position on panel is adjustable
- Kits include 2 or 3 clamps depending on the width of the desk divider
- Use when minimum free space is available on underside of work surface



Edge Clamp - Hex (SCEH)



Middle Clamp - Single (CMS)

- Patented Lever allows for easy installation with no low hanging knob
- Fast & easy installation and relocation
- Mount perpendicular to edge of work surface
- Clamp fits 5/8" to 2" thick tops
- No screwing or drilling into work surface required
- Only one clamp required to secure a desk divider
- Kits include 1 middle clamp and one metal resting plate

**Patented*



Middle Clamp - Single (SCMS)



Middle Clamp - Double (CMD)

- Patented Lever allows for easy installation with no low hanging knob
- Fast & easy installation and relocation
- Mount perpendicular to edge of work surface
- Clamp fits 5/8" to 2" thick tops
- No screwing or drilling into work surface required
- Kit includes 2 Middle Clamps
- A central metal resting plate will be included with panels 54" and wider for a total of 3 clamps

**Patented*



Middle Clamp - Double (SCMD)



Middle Clamp - Knob (CMKS)

- Fast & easy installation and relocation
- Mount perpendicular to edge of work surface
- Clamp fits 1.1" to 1.22" thick tops
- No screwing or drilling into work surface
- Only one clamp required to secure panel to work surface
- Kit includes 1 middle clamp with knob and one or two metal resting plates depending on width of panel



Middle Clamp - Knob (SCMKS)

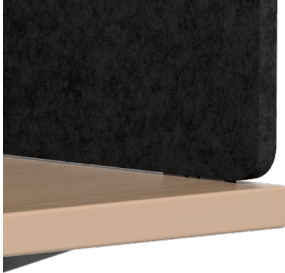


Free Standing Foot (FS)

- Fast & easy installation and relocation
- Stands freely on top of work surface
- Clamp position on panel is adjustable
- No screwing or drilling into work surface required
- A center Pad will be included on units 54" and wider



Free Standing (SFS)

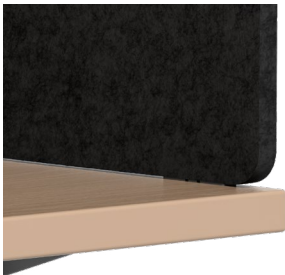


Invisible Mount (IM)

- For use with 3/4" (18mm) acoustic EchoScape™ only
- Permanent mount - Screw down
- Mounting locations on EchoScape™ panel are preset and posts slide into panel for invisible Mount
- Kits include 2 or 3 Invisible Mounts depending on width of panel

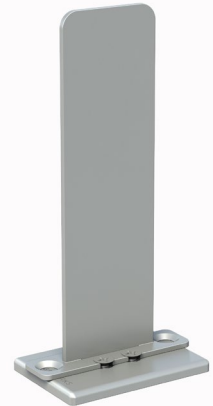


Invisible Mount (IM)



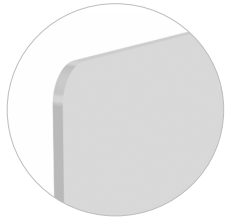
Invisible Adhesive Mount (SIM.R)

- For use with 3/4" (18mm) acoustic EchoScape™ only
- Removable adhesive strips are used to attach metal plate to top cap
- Aluminum cover snaps into metal plate and Invisible Mount is screwed into cover
- Mounting locations on EchoScape™ panel are preset and posts slide into panel for invisible mount
- Kits include 2 or 3 Invisible Mounts depending on width of panel



Invisible Adhesive Mount (SIM.R)

ENCLAVE™ PRIVACY PLUS PANEL



ENCLAVE™ PRIVACY PLUS PANEL

Style - Frosted Acrylic
(FRO)

* Clamps available in
Silver (S) or Black (B)

MOUNTING OPTIONS

FADP8-FRO

Width	Height	Weight (lbs)	Base Price	Top Mount	Price	Tower Adhesive Mount	Price	Edge Clamp Knob	Edge Clamp Lever	Edge Clamp Hex	Middle Clamp	Middle Clamp Double	Middle Clamp Knob	Free Standing	Price
17" *	12"	5	\$132	* TM2	+\$38	STW,R2	+\$60	* CEK2	* CEL2	SCEH2	SCMS	SCMD	SCMKS	SFS2	+\$66
17" *	16"	6	\$153	* TM2	+\$38	STW,R2	+\$60	* CEK2	* CEL2	SCEH2	SCMS	SCMD	SCMKS	SFS2	+\$66
17" *	18"	7	\$163	* TM2	+\$38	STW,R2	+\$60	* CEK2	* CEL2	SCEH2	SCMS	SCMD	SCMKS	SFS2	+\$66
17" *	24"	8	\$216	* TM2	+\$38	STW,R2	+\$60	* CEK2	* CEL2	SCEH2	SCMS	SCMD	SCMKS	SFS2	+\$66
17" *	30"	10	\$273	* TM2	+\$38	STW,R2	N/A	* CEK2	* CEL2	SCEH2	SCMS	SCMD	SCMKS	SFS2	+\$66
23" *	12"	6	\$153	* TM2	+\$38	STW,R2	+\$60	* CEK2	* CEL2	SCEH2	SCMS	SCMD	SCMKS	SFS2	+\$66
23" *	16"	7	\$184	* TM2	+\$38	STW,R2	+\$60	* CEK2	* CEL2	SCEH2	SCMS	SCMD	SCMKS	SFS2	+\$66
23" *	18"	8	\$195	* TM2	+\$38	STW,R2	+\$60	* CEK2	* CEL2	SCEH2	SCMS	SCMD	SCMKS	SFS2	+\$66
23" *	24"	10	\$237	* TM2	+\$38	STW,R2	+\$60	* CEK2	* CEL2	SCEH2	SCMS	SCMD	SCMKS	SFS2	+\$66
23" *	30"	12	\$378	* TM2	+\$38	STW,R2	N/A	* CEK2	* CEL2	SCEH2	SCMS	SCMD	SCMKS	SFS2	+\$66
29" *	12"	7	\$174	* TM2	+\$38	STW,R2	+\$60	* CEK2	* CEL2	SCEH2	SCMS	SCMD	SCMKS	SFS2	+\$66
29" *	16"	8	\$221	* TM2	+\$38	STW,R2	+\$60	* CEK2	* CEL2	SCEH2	SCMS	SCMD	SCMKS	SFS2	+\$66
29" *	18"	9	\$221	* TM2	+\$38	STW,R2	+\$60	* CEK2	* CEL2	SCEH2	SCMS	SCMD	SCMKS	SFS2	+\$66
29" *	24"	11	\$252	* TM2	+\$38	STW,R2	+\$60	* CEK2	* CEL2	SCEH2	SCMS	SCMD	SCMKS	SFS2	+\$66
29" *	30"	13	\$389	* TM2	+\$38	STW,R2	N/A	* CEK2	* CEL2	SCEH2	SCMS	SCMD	SCMKS	SFS2	+\$66

ENCLAVE™ PRIVACY PLUS PANEL

Style - Clear Acrylic
(CLR)

* Clamps available in
Silver (S) or Black (B)

MOUNTING OPTIONS

FADP8-CLR

Width	Height	Weight (lbs)	Base Price	Top Mount	Price	Tower Adhesive Mount	Price	Edge Clamp Knob	Edge Clamp Lever	Edge Clamp Hex	Middle Clamp	Middle Clamp Double	Middle Clamp Knob	Free Standing	Price
17" *	12"	5	\$130	* TM2	+\$38	STW,R2	+\$60	* CEK2	* CEL2	SCEH2	SCMS	SCMD	SCMKS	SFS2	+\$66
17" *	16"	6	\$155	* TM2	+\$38	STW,R2	+\$60	* CEK2	* CEL2	SCEH2	SCMS	SCMD	SCMKS	SFS2	+\$66
17" *	18"	7	\$170	* TM2	+\$38	STW,R2	+\$60	* CEK2	* CEL2	SCEH2	SCMS	SCMD	SCMKS	SFS2	+\$66
17" *	24"	8	\$325	* TM2	+\$38	STW,R2	+\$60	* CEK2	* CEL2	SCEH2	SCMS	SCMD	SCMKS	SFS2	+\$66
17" *	30"	10	\$330	* TM2	+\$38	STW,R2	N/A	* CEK2	* CEL2	SCEH2	SCMS	SCMD	SCMKS	SFS2	+\$66
23" *	12"	6	\$145	* TM2	+\$38	STW,R2	+\$60	* CEK2	* CEL2	SCEH2	SCMS	SCMD	SCMKS	SFS2	+\$66
23" *	16"	7	\$190	* TM2	+\$38	STW,R2	+\$60	* CEK2	* CEL2	SCEH2	SCMS	SCMD	SCMKS	SFS2	+\$66
23" *	18"	8	\$195	* TM2	+\$38	STW,R2	+\$60	* CEK2	* CEL2	SCEH2	SCMS	SCMD	SCMKS	SFS2	+\$66
23" *	24"	10	\$330	* TM2	+\$38	STW,R2	+\$60	* CEK2	* CEL2	SCEH2	SCMS	SCMD	SCMKS	SFS2	+\$66
23" *	30"	12	\$360	* TM2	+\$38	STW,R2	N/A	* CEK2	* CEL2	SCEH2	SCMS	SCMD	SCMKS	SFS2	+\$66
29" *	12"	7	\$175	* TM2	+\$38	STW,R2	+\$60	* CEK2	* CEL2	SCEH2	SCMS	SCMD	SCMKS	SFS2	+\$66
29" *	16"	8	\$225	* TM2	+\$38	STW,R2	+\$60	* CEK2	* CEL2	SCEH2	SCMS	SCMD	SCMKS	SFS2	+\$66
29" *	18"	9	\$225	* TM2	+\$38	STW,R2	+\$60	* CEK2	* CEL2	SCEH2	SCMS	SCMD	SCMKS	SFS2	+\$66
29" *	24"	11	\$340	* TM2	+\$38	STW,R2	+\$60	* CEK2	* CEL2	SCEH2	SCMS	SCMD	SCMKS	SFS2	+\$66
29" *	30"	13	\$370	* TM2	+\$38	STW,R2	N/A	* CEK2	* CEL2	SCEH2	SCMS	SCMD	SCMKS	SFS2	+\$66

NOTE:

All pricing in USD

Quantity of mounting clamps noted as last number in SKU

Middle Clamp (SCMS) and Middle Clamp Knob (SCMKS) kits include 1 clamp and 1 metal stability plate

* Dimension is 1" less than width of desk to allow for rear panel

Middle Clamp Double (SCMD) includes 2 clamps



ENCLAVE™ PRIVACY PLUS PANEL

ENCLAVE™ PRIVACY PLUS PANEL

Style - EchoScape™
(PE18)

3/4" (18mm) thickness

See pages 9-10 for Banner
Design Cutout Options

* Clamps available in
Silver (S) or Black (B)

MOUNTING OPTIONS

FADP8-PE18

Width	Height	Weight (lbs)	Base Price	Banner Design Cutout (optional)	Top Mount	Price	Edge Clamp Knob	Edge Clamp Lever	Edge Clamp Hex	Middle Clamp	Middle Clamp Double	Middle Clamp Knob	Free Standing	Price
17" *	12"	4	\$135	+\$30	* TM2	+\$38	* CEK2	* CEL2	SCEH2	SCMS	SCMD	SCMKS	SFS2	+\$66
17" *	16"	5	\$160	+\$30	* TM2	+\$38	* CEK2	* CEL2	SCEH2	SCMS	SCMD	SCMKS	SFS2	+\$66
17" *	18"	5	\$175	+\$30	* TM2	+\$38	* CEK2	* CEL2	SCEH2	SCMS	SCMD	SCMKS	SFS2	+\$66
17" *	24"	6	\$230	+\$30	* TM2	+\$38	* CEK2	* CEL2	SCEH2	SCMS	SCMD	SCMKS	SFS2	+\$66
17" *	30"	6	\$285	+\$30	* TM2	+\$38	* CEK2	* CEL2	SCEH2	SCMS	SCMD	SCMKS	SFS2	+\$66
23" *	12"	4	\$150	+\$30	* TM2	+\$38	* CEK2	* CEL2	SCEH2	SCMS	SCMD	SCMKS	SFS2	+\$66
23" *	16"	5	\$180	+\$30	* TM2	+\$38	* CEK2	* CEL2	SCEH2	SCMS	SCMD	SCMKS	SFS2	+\$66
23" *	18"	5	\$185	+\$30	* TM2	+\$38	* CEK2	* CEL2	SCEH2	SCMS	SCMD	SCMKS	SFS2	+\$66
23" *	24"	6	\$240	+\$30	* TM2	+\$38	* CEK2	* CEL2	SCEH2	SCMS	SCMD	SCMKS	SFS2	+\$66
23" *	24"	7	\$390	+\$30	* TM2	+\$38	* CEK2	* CEL2	SCEH2	SCMS	SCMD	SCMKS	SFS2	+\$66
29" *	12"	5	\$180	+\$40	* TM2	+\$38	* CEK2	* CEL2	SCEH2	SCMS	SCMD	SCMKS	SFS2	+\$66
29" *	16"	6	\$215	+\$40	* TM2	+\$38	* CEK2	* CEL2	SCEH2	SCMS	SCMD	SCMKS	SFS2	+\$66
29" *	18"	6	\$220	+\$40	* TM2	+\$38	* CEK2	* CEL2	SCEH2	SCMS	SCMD	SCMKS	SFS2	+\$66
29" *	24"	7	\$245	+\$40	* TM2	+\$38	* CEK2	* CEL2	SCEH2	SCMS	SCMD	SCMKS	SFS2	+\$66
29" *	30"	8	\$485	+\$40	* TM2	+\$38	* CEK2	* CEL2	SCEH2	SCMS	SCMD	SCMKS	SFS2	+\$66

ENCLAVE™ PRIVACY PLUS PANEL

Style - EchoScape™ Invisible Mount
(IPE18)

3/4" (18mm) thickness

See pages 9-10 for Banner
Design Cutout Options

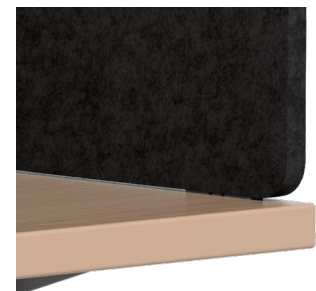
MOUNTING OPTION

FAD-IPE18

Width	Height	Weight (lbs)	Base Price	Banner Design Cutout (optional)	Invisible Mount	Price	Invisible Adhesive Mount	Price
17" *	12"	4	\$135	N/A	IM2	+\$38	SIM.R2	+\$60
17" *	16"	5	\$160	+\$30	IM2	+\$38	SIM.R2	+\$60
17" *	18"	5	\$175	+\$30	IM2	+\$38	SIM.R2	+\$60
17" *	24"	6	\$230	+\$30	IM2	+\$38	SIM.R2	+\$60
17" *	30"	6	\$285	+\$30	IM2	+\$38	SIM.R2	N/A
23" *	12"	4	\$150	N/A	IM2	+\$38	SIM.R2	+\$60
23" *	16"	5	\$180	+\$30	IM2	+\$38	SIM.R2	+\$60
23" *	18"	5	\$185	+\$30	IM2	+\$38	SIM.R2	+\$60
23" *	24"	6	\$240	+\$30	IM2	+\$38	SIM.R2	+\$60
23" *	30"	7	\$390	+\$30	IM2	+\$38	SIM.R2	N/A
29" *	12"	5	\$180	N/A	IM2	+\$38	SIM.R2	+\$60
29" *	16"	6	\$215	+\$40	IM2	+\$38	SIM.R2	+\$60
29" *	18"	6	\$220	+\$40	IM2	+\$38	SIM.R2	+\$60
29" *	24"	7	\$245	+\$40	IM2	+\$38	SIM.R2	+\$60
29" *	30"	8	\$485	+\$40	IM2	+\$38	SIM.R2	N/A



Shown with EchoScape™ Invisible Mount (IPE18)



Shown with EchoScape™ Invisible Mount (IPE18)

NOTE:

All pricing in USD

Quantity of mounting clamps noted as last number in SKU

Middle Clamp (SCMS) and Middle Clamp Knob (SCMKS) kits include 1 clamp and 1 metal stability plate

Middle Clamp Double (SCMD) includes 2 clamps

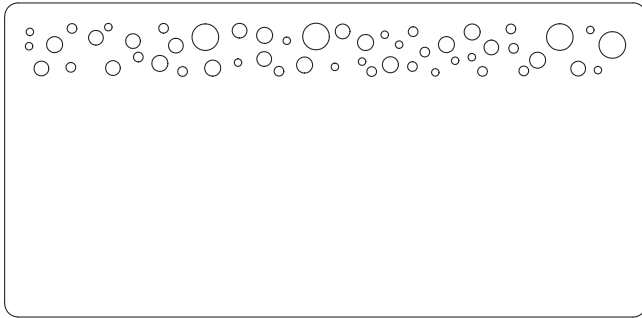
* Dimension is 1" less than width of desk to allow for rear panel

Sound Absorbent - EchoScape™ 3/4" (18mm), is rated at .9 NRC

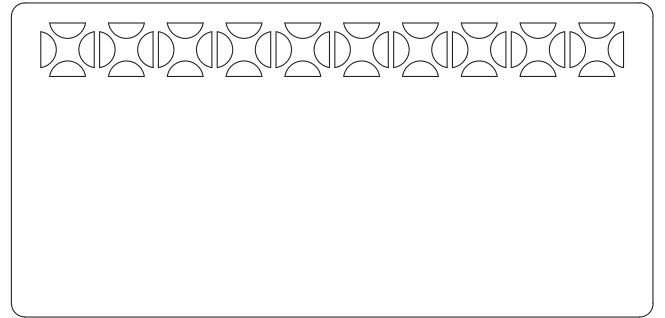
Eco-Friendly - EchoScape™ is made from 60% post-consumer reclaimed plastic water bottles, is VOC-free, and 100% recyclable

DESIGN CUTOUTS

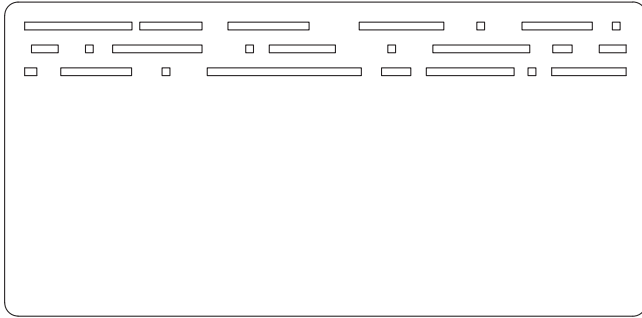
Available in EchoScape™ (PE18) and EchoScape™ Invisible Mount (IPE18)



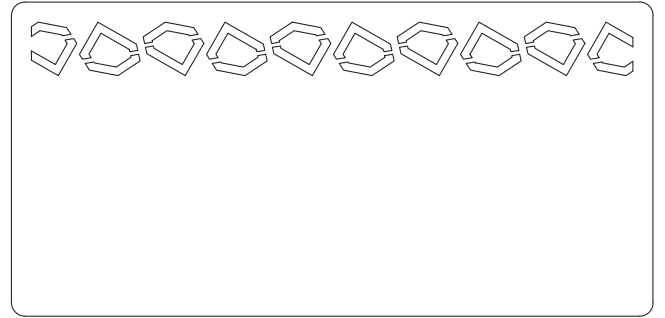
D002 - FIZZY



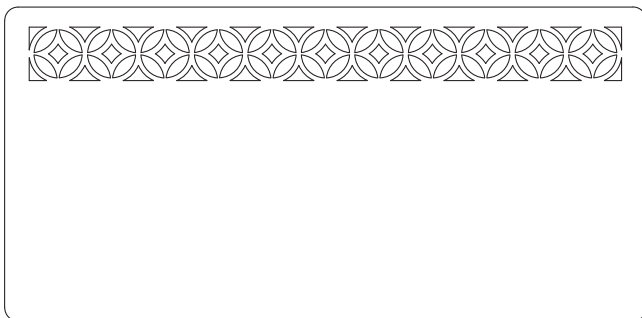
D004 - METRO



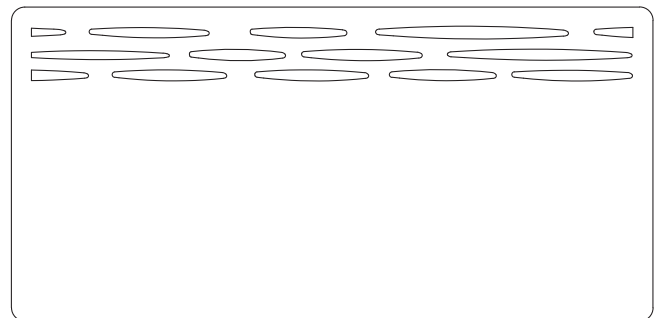
D005 - DASH



D008 - TRIBAL



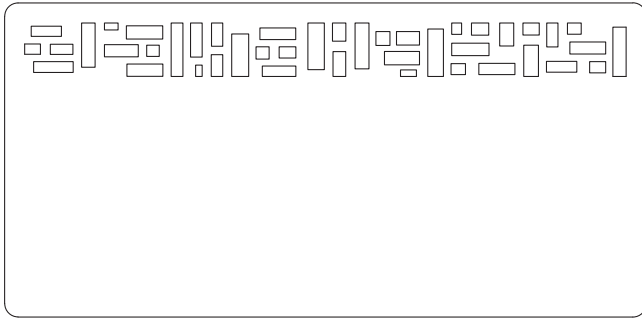
D016 - RETRO



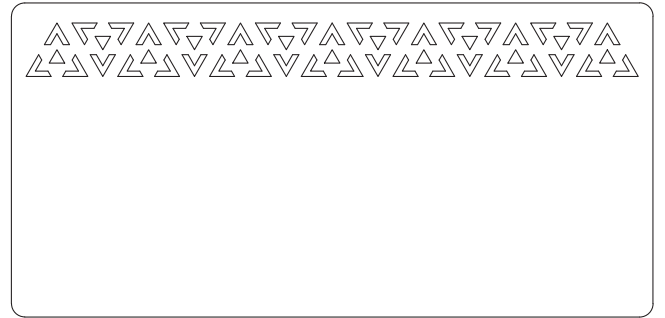
D017 - STRATA

DESIGN CUTOUTS

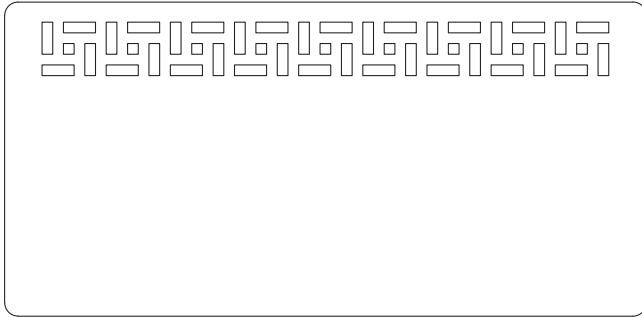
Available in EchoScape™ (PE18) and EchoScape™ Invisible Mount (IPE18)



D021 - MAZE

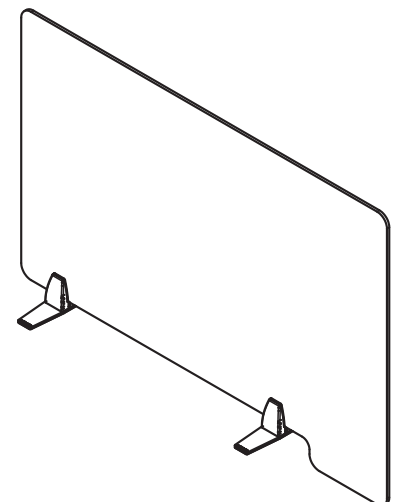
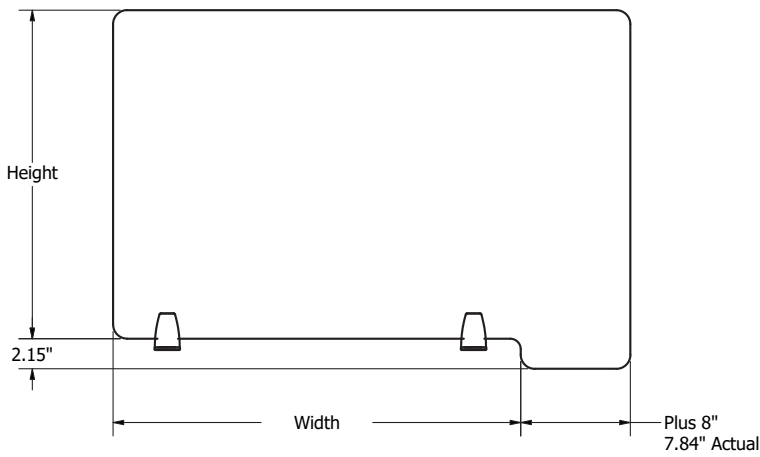


D022 - AZTEC



D023 - PINWHEEL

LINE DRAWINGS



CORE MATERIAL OPTIONS

ECHOSCAPE™ 3/4" (18MM) (P1_)



Ash
P100



Charcoal
P101



Cobalt
P102



Pear
P103



Sandstone
P104



Slate
P105



Iced Grey
P106



Linen
P107