

# FLIP-N-NEST™ TRAINING TABLES

Price Effective - January 1, 2021

## CREATING SPACE IN YOUR WORKSPACE

Flip-N-Nest™ training tables provide a flexible option for your multipurpose meeting space. The height adjustable base and locking casters allow you to efficiently and easily reconfigure your space. The one-handed lever mechanism flips top back for easy transport and nesting for compact storage. Built for heavy usage and constant movement, our cost effective, and functional Flip-N-Nest tables accommodate your various needs and spaces.

These durable, all-purpose, collaborative tables are designed for use in a wide variety of applications such as training rooms, conference rooms, mailrooms, classrooms and lecture halls and computer labs.



### TABLE BASE

- Base adjusts from 28.5" to 45" high
- Top flips back with a one-handed lever mechanism
- Black power-coated steel frame includes stabilizing bar and 2" casters – 4 casters total with 2 locking casters
- Supports up to 300 lbs.
- Optional modesty panel available to 60" and 72" Wide Tables
- Table connectors available for secure placement for multiple tables
- 5-Day Quick Ship on Flip-N-Nest base only, 3-week lead time on worksurface

### TABLETOP

- High Pressure Laminate
- 3mm Edgebanding
- Top Thickness 1.25"
- Optional grommets available



How to build your SKU:

Step 1:  
Choose your  
Model

FNB

Step 2:  
Choose your  
Table Width

SV

### FLIP-N-NEST™ BASE

| Model                  | Table Width       |
|------------------------|-------------------|
| FNB Flip-N-Nest™ Table | 48"<br>60"<br>72" |

## FNN-2000 FLIP TOP TRAINING TABLES WITH CASTERS

| Model # | Width | Base Price |
|---------|-------|------------|
| FNB-48  | 48"   | \$428      |
| FNB-60  | 60"   | \$450      |
| FNB-72  | 72"   | \$486      |

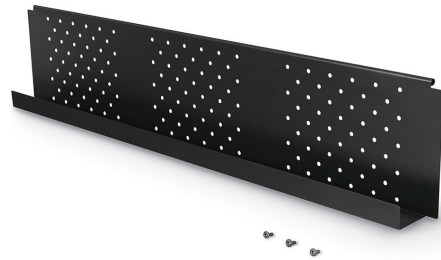
NOTE:  
All pricing in USD

## ACCESSORIES



**FNB-TC**  
**\$67**

Table Connectors - Set of 2 for all sizes



## MODESTY PANELS (OPTIONAL)

| SKU        | Width | Price  |
|------------|-------|--------|
| N/A        | 48"   | N/A    |
| FNB-MOD-60 | 60"   | +\$156 |
| FNB-MOD-72 | 72"   | +\$164 |

## WORKSURFACES

MergeWorks' worksurfaces are made from High Pressure Laminate (HPL) with a coordinating or solid color 3mm edge band. Extremely functional, versatile and durable HPL worksurfaces are scratch, water and impact resistant.

How to build your SKU:

|                                       |  |                                    |  |   |
|---------------------------------------|--|------------------------------------|--|---|
| Step 1:<br>Choose your<br>Worksurface | Step 2:<br>Choose your<br>Laminate Color | Step 3:<br>Choose your<br>Edgeband | Step 4:<br>Choose your<br>Grommet Location | Step 5:<br>Choose your<br>Grommet Color |
| WS-7224                               | L110                                     | EM                                 | C  | GB                                      |

## FLIP-N-NEST™ WORKSURFACE

| Rectangular Worksurface | Laminate Color        | Edgeband         | Grommet Location         | Grommet Color |
|-------------------------|-----------------------|------------------|--------------------------|---------------|
| WS-4824 48"w x 24"d     | L1_ Standard Laminate | EM Matching      | N No Grommet             | GS Silver     |
| WS-6024 60"w x 24"d     | L3_ Premium Laminate  | EP Multi-plywood | L Left                   | GB Black      |
| WS-7224 72"w x 24"d     |                       | ES Silver        | C Center                 | GW White      |
|                         |                       | EB Black         | R Right                  |               |
|                         |                       | EW White         | LC Left & Center         |               |
|                         |                       |                  | LR Left & Right          |               |
|                         |                       |                  | CR Center & Right        |               |
|                         |                       |                  | LCR Left, Center & Right |               |

## RECTANGULAR HPL WORKSURFACE

| Model # | Size        | L100 Laminates | L300 Laminates |
|---------|-------------|----------------|----------------|
| WS-4824 | 48"w x 24"d | <b>\$342</b>   | <b>\$420</b>   |
| WS-6024 | 60"w x 24"d | <b>\$415</b>   | <b>\$515</b>   |
| WS-7224 | 72"w x 24"d | <b>\$489</b>   | <b>\$604</b>   |

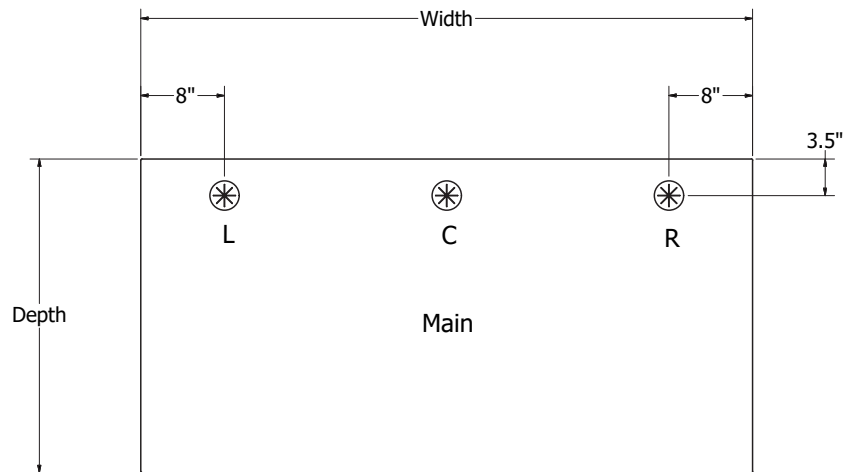


## EDGEBAND OPTIONS

| Model # | Color         | Price |
|---------|---------------|-------|
| EM      | Matching      | +\$0  |
| EP      | Multi-plywood | +\$0  |
| ES      | Silver        | +\$0  |
| EB      | Black         | +\$0  |
| EW      | White         | +\$0  |

## GROMMET LOCATION

| Model # | Location & Qty           | Price |
|---------|--------------------------|-------|
| N       | No Grommet               | \$0   |
| L       | Left (1)                 | \$25  |
| C       | Center (1)               | \$25  |
| R       | Right (1)                | \$25  |
| LC      | Left & Center (2)        | \$50  |
| LR      | Left & Right (2)         | \$50  |
| CR      | Center & Right (2)       | \$50  |
| LCR     | Left, Center & Right (3) | \$75  |



GROMMET LOCATIONS

Pricing in USD

## LAMINATES AND WOODGRAINS SERIES 100 (L1\_)



Phantom Ecru  
L100



New Age Oak  
L102



Black Walnut  
L104



Bleached Legno  
L105



Smokey Brown Pear  
L106



Cafelle  
L107



Blackened Legno  
L108



Brite White  
L109



Folkstone  
L110



Huntington Maple  
L118



Asian Night  
L119



Fusion Maple  
L120



Grey Elm  
L121

## LAMINATES AND WOODGRAINS SERIES 300 (L3\_)



Antique Cognac Pine  
L300



Recon Olive  
L301



Repurposed  
Oak Plank  
L302



Small Planked  
L303



Mocha Olive  
L304



Lost Pine  
L305



Antique Barrel  
L306



Reclaimed  
Oak Plank  
L307

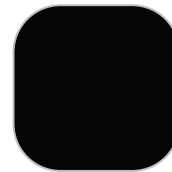
## GROMMET FINISHES, EDGE BAND FINISHES



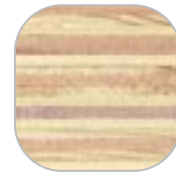
White  
WT



Silver  
SV



Black  
BK



Multi-plywood  
(Edgeband only)