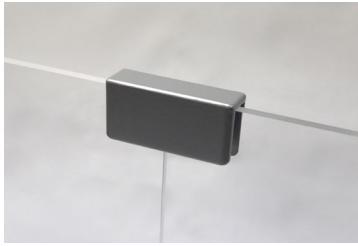


ACCESSORIES

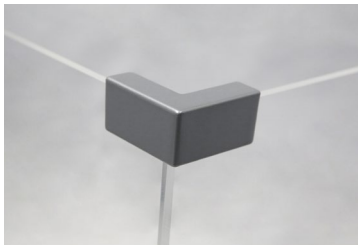
Enclave and Stacker Panel Connectors

Price Effective - January 1, 2021



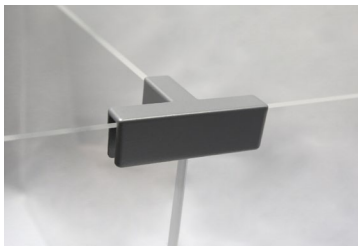
STK-CON-180-SV
Straight Acrylic Panel
Connectors

Straight Acrylic Panel Connectors	SKU	Price
<ul style="list-style-type: none"> • Straight Connector • Use with Enclave and Stackers Clear and Frosted Acrylic Panels • Fits 1/8" and 1/4" acrylic • Zinc die cast with silver powder coat • Plastic inserts to protect acrylic • Inset screws hold connector to acrylic • Dimensions: 2.3"W x 0.7"D x 1.1"H 	STK-CON-180-SV	\$20



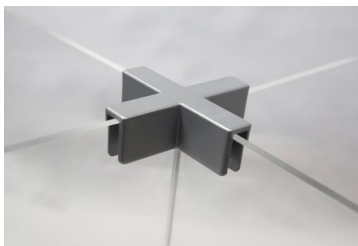
STK-CON-90-SV
90° Acrylic Panel
Connectors

90° Acrylic Panel Connectors	SKU	Price
<ul style="list-style-type: none"> • 90° Connector • Use with Enclave and Stackers Clear and Frosted Acrylic Panels • Fits 1/8" and 1/4" acrylic • Zinc die cast with silver powder coat • Plastic inserts to protect acrylic • Inset screws hold connector to acrylic • Dimensions: 2.1"W x 2.1"D x 1.1"H 	STK-CON-90-SV	\$20



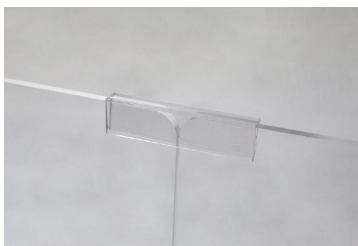
STK-CON-3WAY-SV
3-Way Acrylic Panel
Connectors

3-Way Acrylic Panel Connectors	SKU	Price
<ul style="list-style-type: none"> • 3-Way Connector • Use with Enclave and Stackers Clear and Frosted Acrylic Panels • Fits 1/8" and 1/4" acrylic • Zinc die cast with silver powder coat • Plastic inserts to protect acrylic • Inset screws hold connector to acrylic • Dimensions: 3.5"W x 2.1"D x 1.1"H 	STK-CON-3WAY-SV	\$24



STK-CON-4WAY-SV
4-Way Acrylic Panel
Connectors

4-Way Acrylic Panel Connectors	SKU	Price
<ul style="list-style-type: none"> • 4-Way Connector • Use with Enclave and Stackers Clear and Frosted Acrylic Panels • Fits 1/8" and 1/4" acrylic • Zinc die cast with silver powder coat • Plastic inserts to protect acrylic • Inset screws hold connector to acrylic • Dimensions: 2.1"W x 3.5"D x 1.1"H 	STK-CON-4WAY-SV	\$24



STK-CON-180-CL
Clear Acrylic Straight
Connectors

Clear Acrylic Straight Connectors	SKU	Price
<ul style="list-style-type: none"> • Straight Connector • Use with Enclave and Stackers Clear and Frosted Acrylic Panels • Fits 1/8" and 1/4" acrylic • Made from clear acrylic • 3" in length • Attaches on top of panels to connect 2 panels together • Qty 10 per pack • Dimensions: 3"W x 0.4"D x 0.75"H 	STK-CON-180-CL	\$40 - qty 10

ACCESSORIES

Power and Data and Cable Management Accessories



P32B-C
PowerUP™ Clamp-On
Power Dock

PowerUP™ Clamp-On Power Dock	SKU	Price
<ul style="list-style-type: none"> 3 – Power Outlets – 125V 2 - USB Charge Ports – 5V/3.1A (Combined) 8-FT Power Cord UL and cUL Listed Top bracket to hold phone or tablet Clamp mount fits table or desk top up to 1.7" in thickness Clamp dimensions 4"W x 5/8"H x 5/8"L PowerUP™ is available in black or white 	P32W-C	\$179



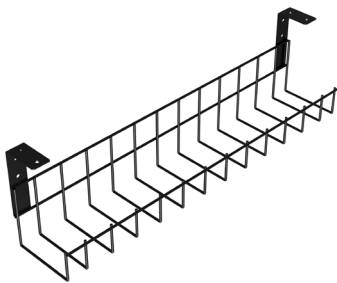
PS-A60W-10
6-Outlet White Power Strip

6-Outlet White Power Strip	SKU	Price
<ul style="list-style-type: none"> 6 Power Outlets – 125V/16A/60HZ UL Certified Lighted Rocker Switch 10-Foot Cord Quick ship – 48 hours/Free shipping 	PS-A60W-10	\$55



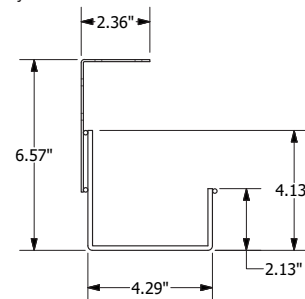
TC-4
Table Connectors

Table Connectors	SKU	Price
<ul style="list-style-type: none"> Designed for use on our Flip-N-Nest tables or any other table or desk Easily connect multiple desks or tables of any shape High load capacity – connectors can support work top without the use of legs Dimensions: 6"x 2" x.7" (4) table connectors per set Steel and plastic construction Low profile design 	TC-4	\$50



WM-A24B
Under Desk Wire Tray Cable
Management

Under Desk Wire Tray Cable Management	SKU	Price
<ul style="list-style-type: none"> Safely organize loose wires, cables, and power strips for a clean and clutter-free work environment Wire basket tray can be used under desks, tables, or on walls Sturdy powder-coated steel, available in silver, black and white Steel installation brackets with pre-drilled holes for easy assembly under desks or on walls Mounting hardware included Dimensions: 23.6" L x 4.1" W x 6.5" D Quick ship – 48 hours / Free shipping 	WM-A24W - White	\$68
	WM-A24S - Silver	\$68
	WM-A24B - Black	\$68



ACCESSORIES

Monitor Arms



AC-SMAU-S
VueLine™ - Single Arm
Adjustable Monitor Mount

VueLine™ – Single Arm Adjustable Monitor Mount	SKU	Price
<ul style="list-style-type: none">• Clamp-on or grommet installation-hardware included• Dual USB 3.0 pass-through ports on base – includes two USB cables• Accommodates screen sizes 17" to 30"• Gas spring provides fluid height adjustment• Arm rotates, 360 degrees at any position• Monitor tilt angles 85 degrees upward and 15 degrees downward• Weight capacity 4.4 – 19.8 lbs.• VESA mounting compliant• Cable management system for organizing wires• Aircraft-grade aluminum with anti-scratch surface in a silver finish	AC-SMAU-S	\$234



AC-DMAU-S
VueLine™ - Dual Arm Adjustable
Monitor Mount

VueLine™ – Dual Arm Adjustable Monitor Mount	SKU	Price
<ul style="list-style-type: none">• Clamp-on or grommet installation-hardware included• Dual USB 3.0 pass-through ports on base – includes two USB cables• Accommodates 2 monitors, screen sizes 17" to 30"• Gas spring provides fluid height adjustment• Arms rotate 360 degrees at any position• Monitor tilt angles 85 degrees upward and 15 degrees downward• Weight capacity 4.4 – 19.8 lbs. per monitor• VESA mounting compliant• Cable management system for organizing wires• Made from Aircraft-grade aluminum with anti-scratch surface in a silver finish	AC-DMAU-S	\$394

ACCESSORIES

Dry Erase Boards



FCC
Flip Chart Clip Set

Flip Chart Clip Set	SKU	Price
<ul style="list-style-type: none"> Fits on all models Clear polycarbonate Dimensions: 3" x 1.5" Clips can be used on all dry erase models 	FCC	\$30



S-LTT
Letter Tray Rail Series

Letter Tray - Rail Series	SKU	Price
<ul style="list-style-type: none"> Keeps your letter size papers or folders neatly organized Designed to fit Annex Dry Erase Boards or on any Slatwall panel Frosted Acrylic Dimensions: 9.5"w x 2"h x 14"l 	S-LTT	\$50



S-LGT
Legal Tray Rail Series

Legal Size Tray - Rail Series	SKU	Price
<ul style="list-style-type: none"> Keeps your letter or legal size papers and folders neatly organized Designed to fit Annex Dry Erase Boards or on any Slatwall panel Frosted Acrylic Dimensions: 15"w x 2"h x 10.5"l 	S-LGT	\$55



S-AT
Accessory Tray Rail Series

Accessory Tray - Rail Series	SKU	Price
<ul style="list-style-type: none"> Designed to fit Annex Dry Erase Boards or on any Slatwall panel Frosted Acrylic Dimensions: 9.5"w x 2"h x 10"l 	S-AT	\$40



S-PC
Pen Cup Rail Series

Pen Cup - Rail Series	SKU	Price
<ul style="list-style-type: none"> Designed to fit Annex Dry Erase Boards or on any Slatwall panel Frosted Acrylic Dimensions: 4"w x 4"h x 3.5"l (2" x 3.25" opening 4" deep) 	S-PC	\$25

ACCESSORIES

Dry Erase Boards



S-WBTR

Marker Tray Rail Series

Marker Tray - Rail Series	SKU	Price
<ul style="list-style-type: none">Upright storage for 6 markersTray space for eraser and moreDesigned to fit Annex Dry Erase Boards or on any Slatwall panelMetal construction with a durable powder coat finishDimensions: 12"w x 2"h x 5"l	M-WBTR	\$65



M-WBTR

Marker Tray Frontage Series

Marker Tray - Frontage Series	SKU	Price
<ul style="list-style-type: none">Upright storage for 6 markersTray space for eraser and moreDesigned to fit Frontage Dry Erase Boards onlyMetal construction with a durable silver/gray powder coat finishDimensions: 14.75"w x 2"h x 5"l	M-WBTR	\$65



M-PTH

Pencil Cup Frontage Series

Pencil Cup - Frontage Series	SKU	Price
<ul style="list-style-type: none">Designed to fit Frontage Dry Erase Boards onlyMetal construction with a durable powder coated finishDimensions: 3" x 3" x 5" deep	M-PTH	\$42

ACCESSORIES

Room Dividers and Privacy Partitions



HGEUM
Universal Hinge Kit
Mobile Office Partitions

Universal Hinge Kit - Mobile Room Dividers and Office Partitions	SKU	Price
--	-----	-------

- Our Universal Hinge Kit can be used to create a 2-way, 3-way, or 4-way connection
- The hinge design allows the angle between the partitions to be freely adjusted
- Metal construction with a durable anodized finish
- Kit includes 3 hinges

HGEUM \$60



HGEW
Wall Mount Hinge Kit

Wall Mount Hinge Kit	Qty of Wall Hinges	SKU	Price
----------------------	--------------------	-----	-------

42" – 54" High Partitions	2	HGEW2	\$100
62" – 72" High Partitions	3	HGEW3	\$150
78" – 84" High Partitions	4	HGEW4	\$200

- Wall Mount Hinges attach one side of your Office Partition to a wall
- The hinge design provides 180 degrees of adjustment allowing the partition to come off the wall at any angle
- Includes mounting hardware for sheetrock walls