

TERRACE™ PANEL



FRAMED DESK DIVIDERS

Our framed Terrace™ panel is the perfect solution for both visual and sound privacy. Constructed with streamlined framework on all four sides, the Terrace™ Panel can be manufactured up to 30 inches in height for maximum privacy.

Easy to install permanent and removeable mounting options are available to fit most any work surface. Available in 3 frame colors and a wide range of colors, materials and acoustic properties, our Terrace™ panels are design to merge with any work surface.



- Framework is constructed using lightweight aluminum extrusion
- All metal parts are anodized or powder coated for an aesthetic and durable finish
- Panels sit on top of work surface
- Framed panels available in several materials and colors including Frosted Acrylic, Fabric, TruBrite™ Whiteboard and EchoScape™
- EchoScape™ 3/8" (9mm), our 0.85 NRC rated acoustic solution effectively controls noise disruptions by absorbing sound
- Permanent and removeable mounting options available
- Made in the USA

How to build your SKU:

Step 1:
Choose your Model

TTF

Step 2:
Choose your Width

54

Step 2:

Choose your Height

24

Step 3:
Choose your Frame Color

AA

Step 4:
Choose your Mounting Option

B

Step 5:
Choose your Material and Color

FRO

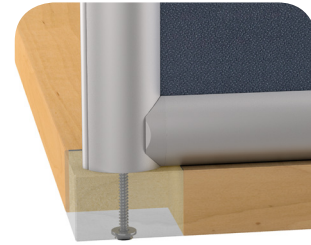
TERRACE™ PANEL

Model	Width	Height	Frame Color	Mounting	Material and Color
TTF Terrace™ Panel	17" 23" 29" 36" 42" 48" 54" 60" 66" 72"	12" 18" 24" 30"	AA Satin Aluminum 20 Pewter BK Black	B Bolt Through CM Middle Clamp CE Edge Clamp T Top Plate	FRO Frosted Acrylic A1_ Colored Frosted Acrylic WB TruBrite™ Whiteboard (Both Sides) F1_ Fabric 100 Series F2_ Fabric 200 Series WB/F1_ TruBrite™ Whiteboard (Side 1) / Fabric 1_ (Side 2) WB/F2_ TruBrite™ Whiteboard (Side 1) / Fabric 2_ (Side 2) P1_ EchoScape™ 3/8" (9mm)

MOUNTING OPTIONS

Bolt Through (B)

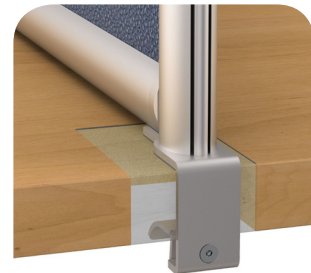
- Cost Effective
- Clean Look
- Permanent Mounting (requires drilling in worksurface)
- Locate anywhere on the desk
- Works on all thickness tops



Bolt Through (B)

Middle Clamp (CM)

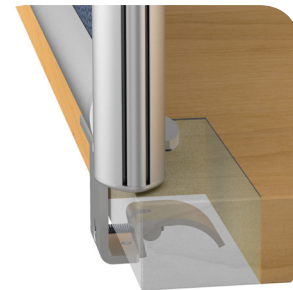
- Patented Lever allows for easy installation with no low hanging knob
 - Fast & easy installation and relocation
 - Mount perpendicular to edge of work surface
 - Clamp fits 5/8" to 2" thick tops
 - No screwing or drilling into worksurface required
 - Only one clamp required to secure a desk divider
- *Patented*



Middle Clamp (CM)

Edge Clamp (CE)

- Patented Lever allows for easy installation with no low hanging knob
 - Fast & easy installation and relocation
 - Mount along the edge of work surface
 - Clamp fits 5/8" to 2" thick tops
 - No screwing or drilling into worksurface required
 - Clamp position is adjustable
 - Kits include 2 or 3 Clamps depending on the width of the desk divider
- *Patented*



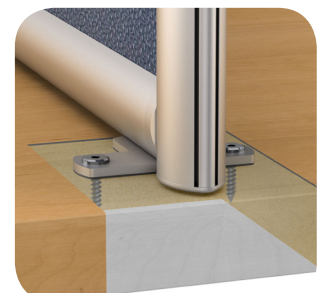
Edge Clamp (CE)

Top Plate (T)

- Use for freestanding or permanent mounting
- Locate anywhere on the desk
- Works on all thickness tops
- Top Plate rotates for single or double sided attachment
- Top Plate positions are adjustable
- Can be used to span two tables
- Kits include 2 or 3 Top Plates depending on the width of the desk divider



Top Plate Single (T)



Top Plate Double (T)

TERRACE™ PANEL

Frosted Acrylic (FRO)

MOUNTING OPTIONS

Width	Height	TTF-FRO	MOUNTING OPTIONS				Qty of Clamps	Weight (lbs)
		Price	Bolt Through (B)	Middle Clamp (CM) *	Edge Clamp (CE)	Top Plate (T)		
17" **	12"	\$220	+0	+20	+30	+30	2	4
17" **	18"	\$250	+0	+20	+30	+30	2	5
17" **	24"	\$290	+0	+20	+30	+30	2	6
17" **	30"	\$330	+0	+20	+30	+30	2	7
23" **	12"	\$250	+0	+20	+30	+30	2	5
23" **	18"	\$285	+0	+20	+30	+30	2	6
23" **	24"	\$340	+0	+20	+30	+30	2	8
23" **	30"	\$390	+0	+20	+30	+30	2	9
29" **	12"	\$275	+0	+20	+30	+30	2	6
29" **	18"	\$325	+0	+20	+30	+30	2	7
29" **	24"	\$375	+0	+20	+30	+30	2	9
29" **	30"	\$510	+0	+20	+30	+30	2	11
36"	12"	\$315	+0	+20	+30	+30	2	7
36"	18"	\$370	+0	+20	+30	+30	2	9
36"	24"	\$435	+0	+20	+30	+30	2	10
36"	30"	\$540	+0	+20	+30	+30	2	12
42"	12"	\$345	+0	N/A	+30	+30	2	8
42"	18"	\$400	+0	N/A	+30	+30	2	10
42"	24"	\$485	+0	N/A	+30	+30	2	12
42"	30"	\$565	+0	N/A	+30	+30	2	14
48"	12"	\$370	+0	N/A	+30	+30	2	9
48"	18"	\$435	+0	N/A	+30	+30	2	11
48"	24"	\$515	+0	N/A	+30	+30	2	13
48"	30"	\$595	+0	N/A	+30	+30	2	16
54"	12"	\$425	+0	N/A	+30	+30	2	9
54"	18"	\$515	+0	N/A	+30	+30	2	12
54"	24"	\$620	+0	N/A	+30	+30	2	15
54"	30"	\$865	+0	N/A	+30	+30	2	17
60"	12"	\$445	+0	N/A	+45	+45	3	10
60"	18"	\$540	+0	N/A	+45	+45	3	13
60"	24"	\$645	+0	N/A	+45	+45	3	16
60"	30"	\$890	+0	N/A	+45	+45	3	19
66"	12"	\$465	+0	N/A	+45	+45	3	11
66"	18"	\$560	+0	N/A	+45	+45	3	14
66"	24"	\$665	+0	N/A	+45	+45	3	17
66"	30"	\$920	+0	N/A	+45	+45	3	20
72"	12"	\$490	+0	N/A	+45	+45	3	12
72"	18"	\$585	+0	N/A	+45	+45	3	15
72"	24"	\$695	+0	N/A	+45	+45	3	19
72"	30"	\$945	+0	N/A	+45	+45	3	22



Shown with Middle Clamp (CM)



NOTE:

All pricing in USD

* Middle Clamp (CM) includes 1 clamp

** Dimension is 1" less than width of desk to allow for rear panel (see page 11)

Frosted Acrylic .2" thick with smooth edges

Frosted Acrylic is fabricated from 100% virgin material

Acrylic is frosted on both sides of panel

TERRACE™ PANEL - COLORED FROSTED ACRYLIC

TERRACE™ PANEL Colored Frosted Acrylic (CFRO)

MOUNTING OPTIONS

Width	Height	TTF-A1_	MOUNTING OPTIONS				Qty of Clamps	Weight (lbs)
		Price	Bolt Through (B)	Middle Clamp (CM) *	Edge Clamp (CE)	Top Plate (T)		
17" **	12"	\$230	+0	+20	+30	+30	2	4
17" **	18"	\$275	+0	+20	+30	+30	2	5
17" **	24"	\$325	+0	+20	+30	+30	2	6
17" **	30"	\$375	+0	+20	+30	+30	2	7
23" **	12"	\$265	+0	+20	+30	+30	2	5
23" **	18"	\$315	+0	+20	+30	+30	2	6
23" **	24"	\$390	+0	+20	+30	+30	2	8
23" **	30"	\$460	+0	+20	+30	+30	2	9
29" **	12"	\$300	+0	+20	+30	+30	2	6
29" **	18"	\$365	+0	+20	+30	+30	2	7
29" **	24"	\$435	+0	+20	+30	+30	2	9
29" **	30"	\$655	+0	+20	+30	+30	2	11
36"	12"	\$345	+0	+20	+30	+30	2	7
36"	18"	\$420	+0	+20	+30	+30	2	9
36"	24"	\$520	+0	+20	+30	+30	2	10
36"	30"	\$685	+0	+20	+30	+30	2	12
42"	12"	\$370	+0	N/A	+30	+30	2	8
42"	18"	\$460	+0	N/A	+30	+30	2	10
42"	24"	\$595	+0	N/A	+30	+30	2	12
42"	30"	\$710	+0	N/A	+30	+30	2	14
48"	12"	\$410	+0	N/A	+30	+30	2	9
48"	18"	\$505	+0	N/A	+30	+30	2	11
48"	24"	\$620	+0	N/A	+30	+30	2	13
48"	30"	\$735	+0	N/A	+30	+30	2	16
54"	12"	\$510	+0	N/A	+30	+30	2	9
54"	18"	\$660	+0	N/A	+30	+30	2	12
54"	24"	\$840	+0	N/A	+30	+30	2	15
54"	30"	\$1,310	+0	N/A	+30	+30	2	17
60"	12"	\$530	+0	N/A	+45	+45	3	10
60"	18"	\$685	+0	N/A	+45	+45	3	13
60"	24"	\$860	+0	N/A	+45	+45	3	16
60"	30"	\$1,335	+0	N/A	+45	+45	3	19
66"	12"	\$550	+0	N/A	+45	+45	3	11
66"	18"	\$705	+0	N/A	+45	+45	3	14
66"	24"	\$885	+0	N/A	+45	+45	3	17
66"	30"	\$1,360	+0	N/A	+45	+45	3	20
72"	12"	\$575	+0	N/A	+45	+45	3	12
72"	18"	\$725	+0	N/A	+45	+45	3	15
72"	24"	\$910	+0	N/A	+45	+45	3	19
72"	30"	\$1,390	+0	N/A	+45	+45	3	22



Shown with Edge Clamp (CE)



NOTE:

All pricing in USD

* Middle Clamp (CM) includes 1 clamp

** Dimension is 1" less than width of desk to allow for rear panel (see page 11)

Frosted Acrylic .2" thick with smooth edges

Frosted Acrylic is fabricated from 100% virgin material

Acrylic is frosted on both sides of panel

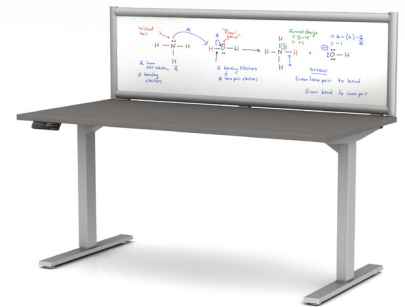
TERRACE™ PANEL
TruBrite™ Whiteboard
(WB)

MOUNTING OPTIONS

		TTF-WB	MOUNTING OPTIONS				Qty of Clamps	Weight (lbs)
Width	Height	Price	Bolt Through (B)	Middle Clamp (CM) *	Edge Clamp (CE)	Top Plate (T)		
17" **	12"	\$200	+0	+20	+30	+30	2	4
17" **	18"	\$240	+0	+20	+30	+30	2	5
17" **	24"	\$275	+0	+20	+30	+30	2	6
17" **	30"	\$315	+0	+20	+30	+30	2	7
23" **	12"	\$230	+0	+20	+30	+30	2	5
23" **	18"	\$270	+0	+20	+30	+30	2	6
23" **	24"	\$325	+0	+20	+30	+30	2	8
23" **	30"	\$375	+0	+20	+30	+30	2	9
29" **	12"	\$260	+0	+20	+30	+30	2	6
29" **	18"	\$305	+0	+20	+30	+30	2	7
29" **	24"	\$360	+0	+20	+30	+30	2	9
29" **	30"	\$510	+0	+20	+30	+30	2	11
36"	12"	\$295	+0	+20	+30	+30	2	7
36"	18"	\$350	+0	+20	+30	+30	2	9
36"	24"	\$425	+0	+20	+30	+30	2	10
36"	30"	\$540	+0	+20	+30	+30	2	12
42"	12"	\$320	+0	N/A	+30	+30	2	8
42"	18"	\$380	+0	N/A	+30	+30	2	10
42"	24"	\$480	+0	N/A	+30	+30	2	12
42"	30"	\$560	+0	N/A	+30	+30	2	14
48"	12"	\$350	+0	N/A	+30	+30	2	9
48"	18"	\$420	+0	N/A	+30	+30	2	11
48"	24"	\$505	+0	N/A	+30	+30	2	13
48"	30"	\$590	+0	N/A	+30	+30	2	16
54"	12"	\$420	+0	N/A	+30	+30	2	9
54"	18"	\$525	+0	N/A	+30	+30	2	12
54"	24"	\$650	+0	N/A	+30	+30	2	15
54"	30"	\$960	+0	N/A	+30	+30	2	17
60"	12"	\$435	+0	N/A	+45	+45	3	10
60"	18"	\$545	+0	N/A	+45	+45	3	13
60"	24"	\$670	+0	N/A	+45	+45	3	16
60"	30"	\$980	+0	N/A	+45	+45	3	19
66"	12"	\$455	+0	N/A	+45	+45	3	11
66"	18"	\$565	+0	N/A	+45	+45	3	14
66"	24"	\$690	+0	N/A	+45	+45	3	17
66"	30"	\$1,005	+0	N/A	+45	+45	3	20
72"	12"	\$475	+0	N/A	+45	+45	3	12
72"	18"	\$585	+0	N/A	+45	+45	3	15
72"	24"	\$715	+0	N/A	+45	+45	3	19
72"	30"	\$1,030	+0	N/A	+45	+45	3	22



Shown with Middle Clamp (CM)



NOTE:

All pricing in USD

* Middle Clamp (CM) includes 1 clamp

** Dimension is 1" less than width of desk to allow for rear panel (see page 11)

TruBrite™ Whiteboard cores have a non-ghosting high-pressure laminate writing surface

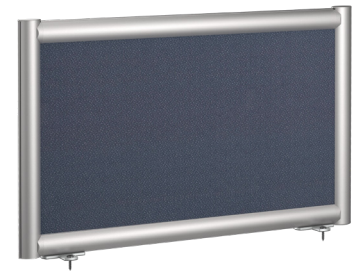
TruBrite™ Whiteboard can be on both sides or with TruBrite™ Whiteboard on side 1 and Fabric on side 2

TERRACE™ PANEL

Fabric
(F_)

MOUNTING OPTIONS

Width	Height	TTF-F1_	TTF-F2_	Bolt Through (B)	Middle Clamp (CM)*	Edge Clamp (CE)	Top Plate (T)	Qty of Clamps	Weight (lbs)
		100 Series	200 Series						
17" **	12"	\$235	\$245	+0	+20	+30	+30	2	4
17" **	18"	\$265	\$280	+0	+20	+30	+30	2	5
17" **	24"	\$305	\$325	+0	+20	+30	+30	2	6
17" **	30"	\$340	\$410	+0	+20	+30	+30	2	7
23" **	12"	\$265	\$280	+0	+20	+30	+30	2	5
23" **	18"	\$305	\$320	+0	+20	+30	+30	2	6
23" **	24"	\$350	\$375	+0	+20	+30	+30	2	8
23" **	30"	\$405	\$495	+0	+20	+30	+30	2	9
29" **	12"	\$285	\$310	+0	+20	+30	+30	2	6
29" **	18"	\$335	\$360	+0	+20	+30	+30	2	7
29" **	24"	\$390	\$435	+0	+20	+30	+30	2	9
29" **	30"	\$460	\$590	+0	+20	+30	+30	2	11
36"	12"	\$330	\$350	+0	+20	+30	+30	2	7
36"	18"	\$385	\$410	+0	+20	+30	+30	2	9
36"	24"	\$450	\$495	+0	+20	+30	+30	2	10
36"	30"	\$565	\$675	+0	+20	+30	+30	2	12
42"	12"	\$360	\$385	+0	N/A	+30	+30	2	8
42"	18"	\$420	\$450	+0	N/A	+30	+30	2	10
42"	24"	\$495	\$545	+0	N/A	+30	+30	2	12
42"	30"	\$590	\$740	+0	N/A	+30	+30	2	14
48"	12"	\$390	\$420	+0	N/A	+30	+30	2	9
48"	18"	\$455	\$490	+0	N/A	+30	+30	2	11
48"	24"	\$545	\$600	+0	N/A	+30	+30	2	13
48"	30"	\$620	\$815	+0	N/A	+30	+30	2	16
54"	12"	\$420	\$460	+0	N/A	+30	+30	2	9
54"	18"	\$500	\$545	+0	N/A	+30	+30	2	12
54"	24"	\$585	\$660	+0	N/A	+30	+30	2	15
54"	30"	\$705	\$940	+0	N/A	+30	+30	2	17
60"	12"	\$450	\$485	+0	N/A	+45	+45	3	10
60"	18"	\$530	\$580	+0	N/A	+45	+45	3	13
60"	24"	\$635	\$710	+0	N/A	+45	+45	3	16
60"	30"	\$860	\$1,005	+0	N/A	+45	+45	3	19
66"	12"	\$495	\$535	+0	N/A	+45	+45	3	11
66"	18"	\$590	\$645	+0	N/A	+45	+45	3	14
66"	24"	\$710	\$790	+0	N/A	+45	+45	3	17
66"	30"	\$995	\$1,155	+0	N/A	+45	+45	3	20
72"	12"	\$525	\$565	+0	N/A	+45	+45	3	12
72"	18"	\$625	\$680	+0	N/A	+45	+45	3	15
72"	24"	\$755	\$840	+0	N/A	+45	+45	3	19
72"	30"	\$1,055	\$1,225	+0	N/A	+45	+45	3	22



Shown with Top Plate (T)



NOTE:

All pricing in USD

* Middle Clamp (CM) includes 1 clamp

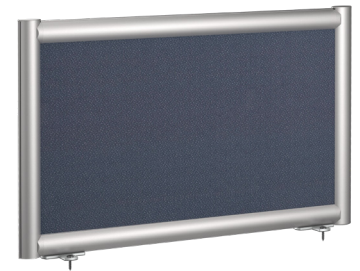
** Dimension is 1" less than width of desk to allow for rear panel (see page 11)

Fabric panels are tackable and available in 34 standard fabrics or COM fabrics

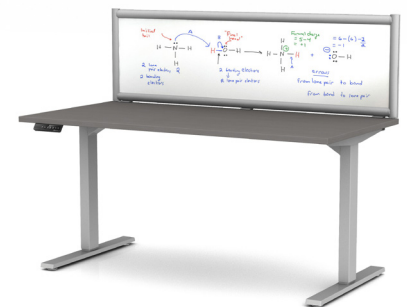
COM fabrics must be tested and approved before orders are accepted

TERRACE™ PANEL

TruBrite™ Whiteboard (side 1) /
Fabric (side2)
(WB / F_)



Shown with Top Plate (T)



MOUNTING OPTIONS

Width	Height	TTF-WB/F1_		TTF-WB/F2_		Bolt Through (B)	Middle Clamp (CM)*	Edge Clamp (CE)	Top Plate (T)	Qty of Clamps	Weight (lbs)
		100 Series	200 Series	100 Series	200 Series						
17" **	12"	\$220	\$230	+0	+20	+30	+30	2	4		
17" **	18"	\$260	\$270	+0	+20	+30	+30	2	5		
17" **	24"	\$300	\$315	+0	+20	+30	+30	2	6		
17" **	30"	\$345	\$380	+0	+20	+30	+30	2	7		
23" **	12"	\$255	\$265	+0	+20	+30	+30	2	5		
23" **	18"	\$295	\$305	+0	+20	+30	+30	2	6		
23" **	24"	\$355	\$370	+0	+20	+30	+30	2	8		
23" **	30"	\$410	\$460	+0	+20	+30	+30	2	9		
29" **	12"	\$280	\$290	+0	+20	+30	+30	2	6		
29" **	18"	\$335	\$350	+0	+20	+30	+30	2	7		
29" **	24"	\$395	\$415	+0	+20	+30	+30	2	9		
29" **	30"	\$525	\$595	+0	+20	+30	+30	2	11		
36"	12"	\$325	\$335	+0	+20	+30	+30	2	7		
36"	18"	\$385	\$400	+0	+20	+30	+30	2	9		
36"	24"	\$465	\$485	+0	+20	+30	+30	2	10		
36"	30"	\$595	\$655	+0	+20	+30	+30	2	12		
42"	12"	\$350	\$365	+0	N/A	+30	+30	2	8		
42"	18"	\$420	\$435	+0	N/A	+30	+30	2	10		
42"	24"	\$520	\$545	+0	N/A	+30	+30	2	12		
42"	30"	\$620	\$700	+0	N/A	+30	+30	2	14		
48"	12"	\$385	\$400	+0	N/A	+30	+30	2	9		
48"	18"	\$460	\$480	+0	N/A	+30	+30	2	11		
48"	24"	\$555	\$585	+0	N/A	+30	+30	2	13		
48"	30"	\$645	\$750	+0	N/A	+30	+30	2	16		
54"	12"	\$445	\$465	+0	N/A	+30	+30	2	9		
54"	18"	\$555	\$575	+0	N/A	+30	+30	2	12		
54"	24"	\$680	\$720	+0	N/A	+30	+30	2	15		
54"	30"	\$950	\$1,070	+0	N/A	+30	+30	2	17		
60"	12"	\$470	\$490	+0	N/A	+45	+45	3	10		
60"	18"	\$580	\$605	+0	N/A	+45	+45	3	13		
60"	24"	\$715	\$750	+0	N/A	+45	+45	3	16		
60"	30"	\$1,040	\$1,120	+0	N/A	+45	+45	3	19		
66"	12"	\$495	\$515	+0	N/A	+45	+45	3	11		
66"	18"	\$610	\$635	+0	N/A	+45	+45	3	14		
66"	24"	\$745	\$785	+0	N/A	+45	+45	3	17		
66"	30"	\$1,085	\$1,170	+0	N/A	+45	+45	3	20		
72"	12"	\$520	\$540	+0	N/A	+45	+45	3	12		
72"	18"	\$635	\$665	+0	N/A	+45	+45	3	15		
72"	24"	\$780	\$825	+0	N/A	+45	+45	3	19		
72"	30"	\$1,125	\$1,220	+0	N/A	+45	+45	3	22		

NOTE:

All pricing in USD

* Middle Clamp (CM) includes 1 clamp

** Dimension is 1" less than width of desk to allow for rear panel (see page 11)

Fabric panels are tackable and available in 34 standard fabrics or COM fabrics

COM fabrics must be tested and approved before orders are accepted

TruBrite™ Whiteboard cores have a non-ghosting high-pressure laminate writing surface

TERRACE™ PANEL
EchoScape™ 3/8" (9mm)
(P1_)

MOUNTING OPTIONS

Width	Height	TTF-P1_	MOUNTING OPTIONS				Qty of Clamps	Weight (lbs)
		Price	Bolt Through (B)	Middle Clamp (CM) *	Edge Clamp (CE)	Top Plate (T)		
17" **	12"	\$190	+0	+20	+30	+30	2	4
17" **	18"	\$220	+0	+20	+30	+30	2	5
17" **	24"	\$250	+0	+20	+30	+30	2	6
17" **	30"	\$280	+0	+20	+30	+30	2	7
23" **	12"	\$215	+0	+20	+30	+30	2	5
23" **	18"	\$250	+0	+20	+30	+30	2	6
23" **	24"	\$285	+0	+20	+30	+30	2	8
23" **	30"	\$325	+0	+20	+30	+30	2	9
29" **	12"	\$240	+0	+20	+30	+30	2	6
29" **	18"	\$275	+0	+20	+30	+30	2	7
29" **	24"	\$320	+0	+20	+30	+30	2	9
29" **	30"	\$410	+0	+20	+30	+30	2	11
36"	12"	\$270	+0	+20	+30	+30	2	7
36"	18"	\$320	+0	+20	+30	+30	2	9
36"	24"	\$365	+0	+20	+30	+30	2	10
36"	30"	\$440	+0	+20	+30	+30	2	12
42"	12"	\$295	+0	N/A	+30	+30	2	8
42"	18"	\$340	+0	N/A	+30	+30	2	10
42"	24"	\$400	+0	N/A	+30	+30	2	12
42"	30"	\$460	+0	N/A	+30	+30	2	14
48"	12"	\$320	+0	N/A	+30	+30	2	9
48"	18"	\$365	+0	N/A	+30	+30	2	11
48"	24"	\$425	+0	N/A	+30	+30	2	13
48"	30"	\$485	+0	N/A	+30	+30	2	16
54"	12"	\$365	+0	N/A	+30	+30	2	9
54"	18"	\$440	+0	N/A	+30	+30	2	12
54"	24"	\$525	+0	N/A	+30	+30	2	15
54"	30"	\$710	+0	N/A	+30	+30	2	17
60"	12"	\$380	+0	N/A	+45	+45	3	10
60"	18"	\$460	+0	N/A	+45	+45	3	13
60"	24"	\$545	+0	N/A	+45	+45	3	16
60"	30"	\$730	+0	N/A	+45	+45	3	19
66"	12"	\$405	+0	N/A	+45	+45	3	11
66"	18"	\$480	+0	N/A	+45	+45	3	14
66"	24"	\$565	+0	N/A	+45	+45	3	17
66"	30"	\$755	+0	N/A	+45	+45	3	20
72"	12"	\$425	+0	N/A	+45	+45	3	12
72"	18"	\$500	+0	N/A	+45	+45	3	15
72"	24"	\$590	+0	N/A	+45	+45	3	19
72"	30"	\$785	+0	N/A	+45	+45	3	22



Shown with Edge Clamp (CE)



NOTE:

All pricing in USD

* Middle Clamp (CM) includes 1 clamp

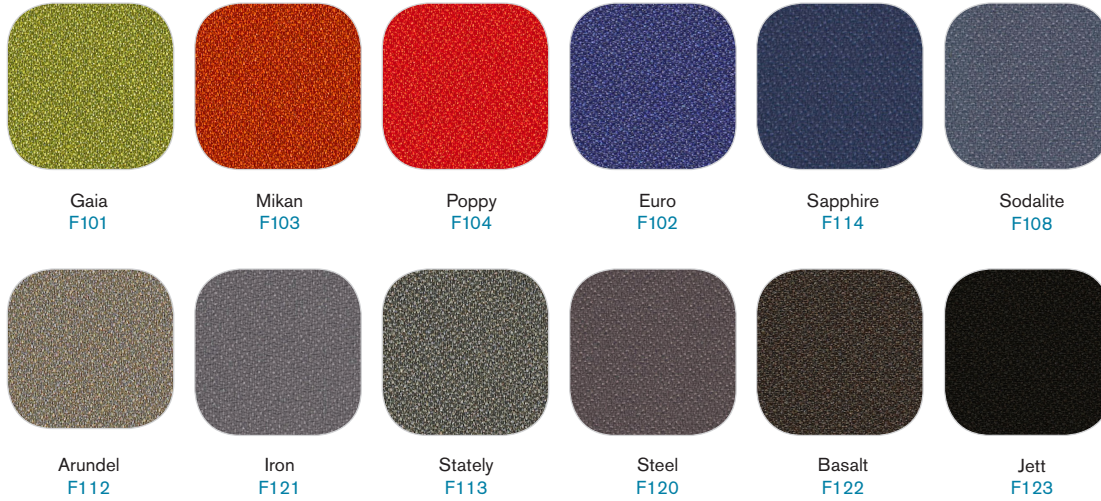
** Dimension is 1" less than width of desk to allow for rear panel (see page 11)

Sound Absorbent - EchoScape™ 3/8" (9mm) is rated at .85 NRC

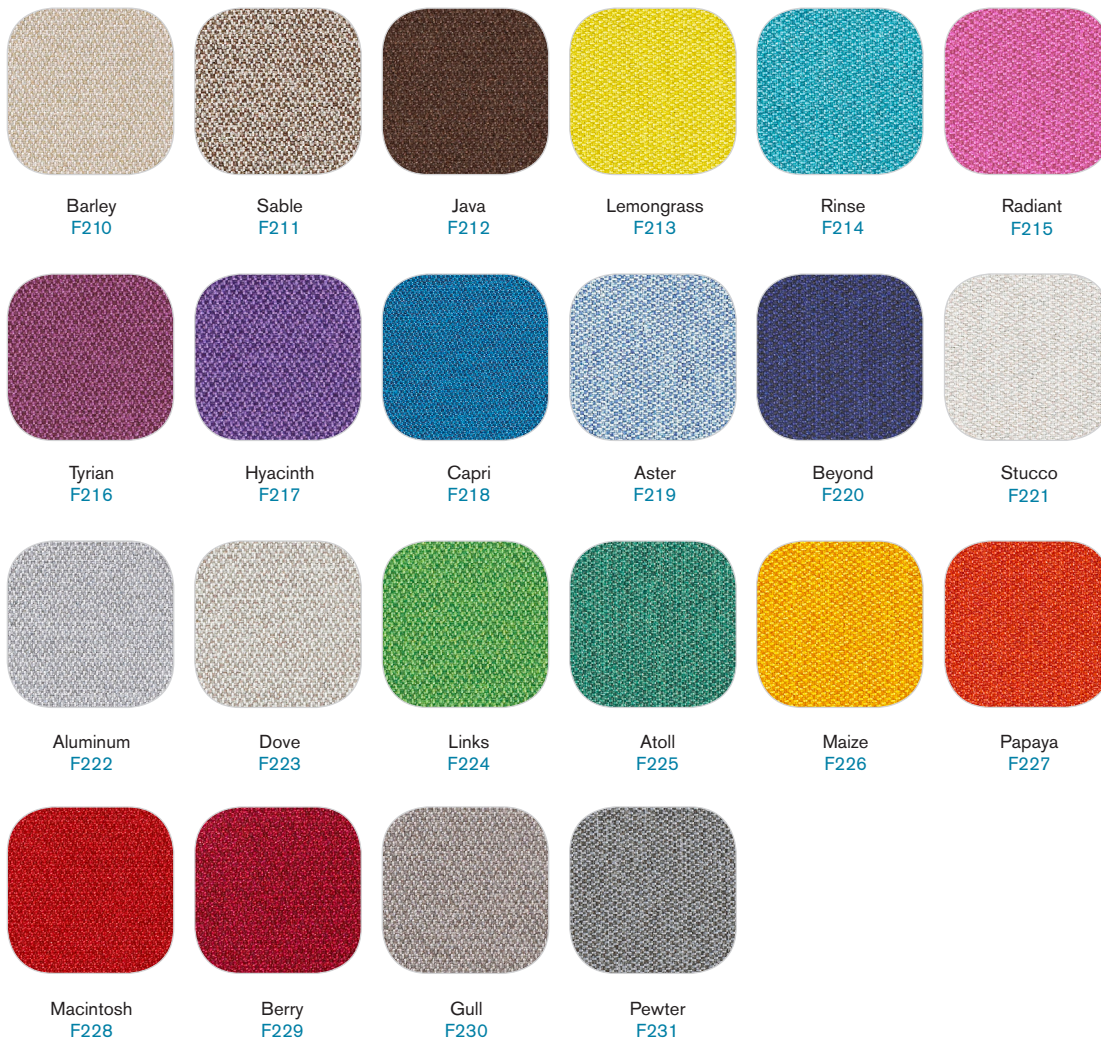
Eco-Friendly - EchoScape™ is made from 60% post-consumer reclaimed plastic water bottles, is VOC-free, and 100% recyclable

CORE MATERIAL OPTIONS

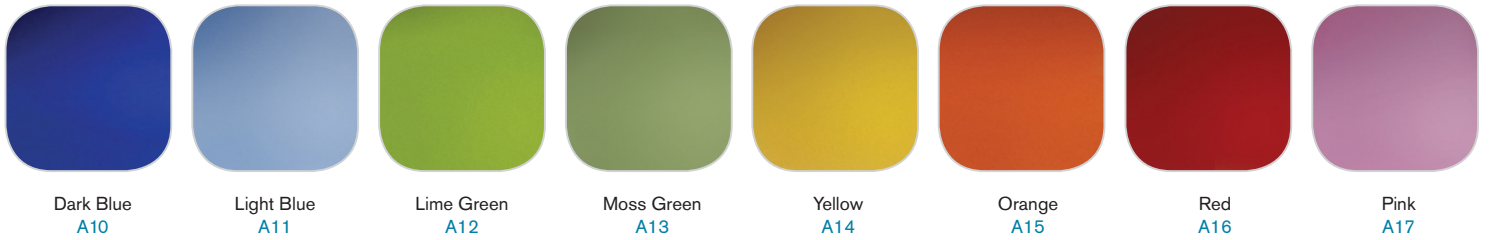
FABRIC SERIES 100 (F1_)



FABRIC SERIES 200 (F2_)



COLORED FROSTED ACRYLICS (A1_)



ECHOSCAPE™ 3/8" (9MM) (P1_)



FRAME COLOR

