

# TERRACE™ ARCED & LINEAR WINGS

## FRAMED DESK DIVIDERS

Terrace™ Arced and Linear wings are an easy and economical way to add privacy to existing workstations. Constructed with our streamlined framework on 3 sides, these stylized wing panels are designed to be used on their own or with our Terrace™ panels.

Both the Linear and Arced wing panels feature the polished smooth edge of our frosted acrylic while the stylized Arced wing transitions down 6-inches at the front of the panel. Available in clear or colored frosted acrylic with several mounting options, the Arced and Linear wing panels are perfect for turning free standing tables into custom cubicles or study carrels.

- Framework is constructed using lightweight aluminum extrusion
- All metal parts are anodized or powder coated for an aesthetic and durable finish
- Wing panels available in all colors of Frosted Acrylic
- Permanent and removeable mounting options available
- Made in the USA
- Customization available – special sizes and mounting options



### How to build your SKU:

Step 1:  
Choose your  
Model

TTL

—

Choose your  
Width

23

Step 2:

Choose your  
Height

18

—

Step 3:  
Choose your  
Frame Color

20

—

Step 4:  
Choose your  
Mounting Option

CE

—

Step 5:  
Choose your Material  
and Color

A101

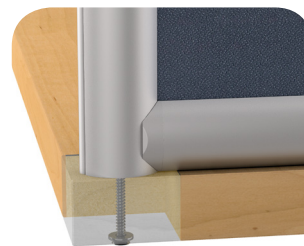
## TERRACE™ LINEAR AND ARCED WING

Model	Width	Height	Frame Color	Mounting	Material and Color
TTL Terrace™ Linear Wing	17"	12"	AA Satin Aluminum	B Bolt Through	FRO Frosted Acrylic
TTA Terrace™ Arced Wing	23"	18"	20 Pewter	CM Clamp Middle	A1_ Colored Frosted Acrylic
	29"	24"	BK Black	CE Clamp Edge	
	36"			T Top Plate	

## MOUNTING OPTIONS

### Bolt Through (B)

- Cost Effective
- Clean Look
- Permanent Mounting (requires drilling in worksurface)
- Locate anywhere on the desk
- Works on all thickness tops



Bolt Through (B)

### Middle Clamp (CM)

- Patented Lever allows for easy installation with no low hanging knob
- Fast & easy installation and relocation
- Mount perpendicular to edge of work surface
- Clamp fits 5/8" to 2" thick tops
- No screwing or drilling into worksurface required
- Only one clamp required to secure a desk divider

*\*Patented*

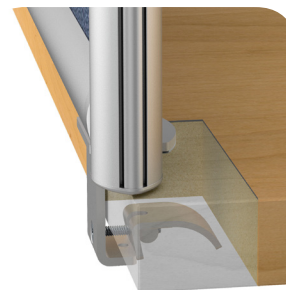


Middle Clamp (CM)

### Edge Clamp (CE)

- Patented Lever allows for easy installation with no low hanging knob
- Fast & easy installation and relocation
- Mount along the edge of work surface
- Clamp fits 5/8" to 2" thick tops
- No screwing or drilling into worksurface required
- Clamp position is adjustable
- Kits include 2 or 3 Clamps depending on the width of the desk divider

*\*Patented*



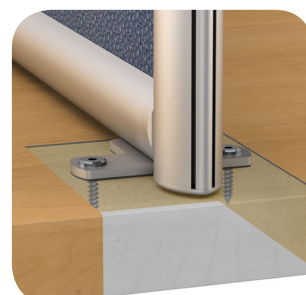
Edge Clamp (CE)

### Top Plate (T)

- Use for freestanding or permanent mounting
- Locate anywhere on the desk
- Works on all thickness tops
- Rotate Top Plates for single or double sided plates
- Top plate positions are adjustable
- Can be used to span two tables
- Kits include 2 or 3 Top Plates depending on the width of the desk divider



Top Plate Single (T)



Top Plate Double (T)

## TERRACE™ ARCED AND LINEAR WING - FROSTED ACRYLIC

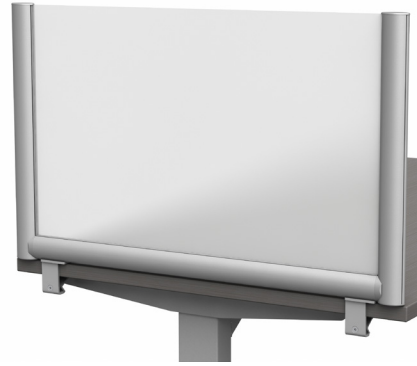
Shown with Edge  
Clamp (CE)



### TERRACE™ ARCED WING

Frosted Acrylic  
(FRO)

Shown with Edge  
Clamp (CE)



### TERRACE™ LINEAR WING

Frosted Acrylic  
(FRO)

#### MOUNTING OPTIONS

Width	Height	TTA-FRO TTL-FRO Price	MOUNTING OPTIONS				Weight (lbs)
			Bolt Through (B)	Middle Clamp (CM) *	Edge Clamp (CE)	Top Plate (T)	
17" **	12"	\$185	+0	+20	+30	+30	4
17" **	18"	\$225	+0	+20	+30	+30	5
17" **	24"	\$255	+0	+20	+30	+30	6
23" **	12"	\$210	+0	+20	+30	+30	5
23" **	18"	\$260	+0	+20	+30	+30	6
23" **	24"	\$300	+0	+20	+30	+30	8
29" **	12"	\$235	+0	+20	+30	+30	6
29" **	18"	\$290	+0	+20	+30	+30	7
29" **	24"	\$340	+0	+20	+30	+30	9
36"	12"	\$270	+0	+20	+30	+30	7
36"	18"	\$350	+0	+20	+30	+30	9
36"	24"	\$380	+0	+20	+30	+30	10

#### NOTE:

All pricing in USD

\* Middle Clamp (CM) includes 1 clamp

\*\* Dimension is 1" less than width of desk to allow for rear panel (see page 6)

Frosted Acrylic .2" thick with smooth edges

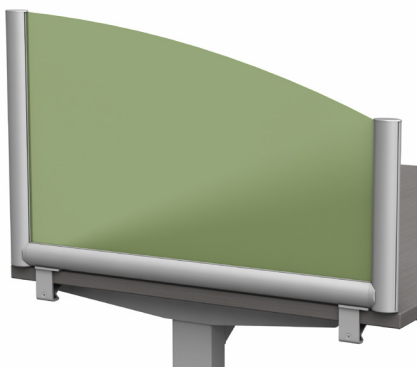
Frosted Acrylic is fabricated from 100% virgin material

Acrylic is frosted on both sides of panel

Arced Model includes a 6" drop from the back to the front of the divider

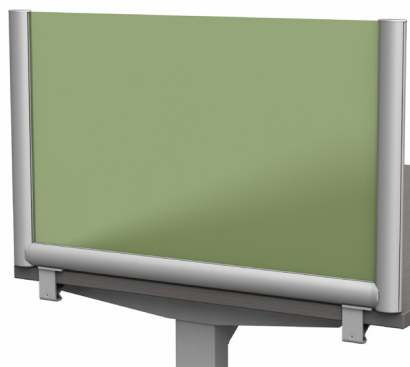
## TERRACE™ ARCED AND LINEAR WING - COLORED FROSTED ACRYLIC

Shown with Edge  
Clamp (CE)



**TERRACE™ ARCED WING**  
Colored Frosted Acrylic  
(CFRO)

Shown with Edge  
Clamp (CE)



**TERRACE™ LINEAR WING**  
Colored Frosted Acrylic  
(CFRO)

### MOUNTING OPTIONS

Width	Height	Price	MOUNTING OPTIONS				Weight (lbs)
			Bolt Through (B)	Middle Clamp (CM) *	Edge Clamp (CE)	Top Plate (T)	
17" **	12"	\$200	+0	+20	+30	+30	4
17" **	18"	\$255	+0	+20	+30	+30	5
17" **	24"	\$290	+0	+20	+30	+30	6
23" **	12"	\$230	+0	+20	+30	+30	5
23" **	18"	\$305	+0	+20	+30	+30	6
23" **	24"	\$350	+0	+20	+30	+30	8
29" **	12"	\$265	+0	+20	+30	+30	6
29" **	18"	\$340	+0	+20	+30	+30	7
29" **	24"	\$410	+0	+20	+30	+30	9
36"	12"	\$310	+0	+20	+30	+30	7
36"	18"	\$440	+0	+20	+30	+30	9
36"	24"	\$465	+0	+20	+30	+30	10

#### NOTE:

All pricing in USD

\* Middle Clamp (CM) includes 1 clamp

\*\* Dimension is 1" less than width of desk to allow for rear panel (see page 6)

Frosted Acrylic .2" thick with smooth edges

Frosted Acrylic is fabricated from 100% virgin material

Acrylic is frosted on both sides of panel

Arced Model includes a 6" drop from the back to the front of the divider

## CORE MATERIAL OPTIONS

### COLORED FROSTED ACRYLICS (A1\_)



Dark Blue  
A10



Light Blue  
A11



Lime Green  
A12



Moss Green  
A13



Yellow  
A14



Orange  
A15



Red  
A16



Pink  
A17

### FRAME COLOR



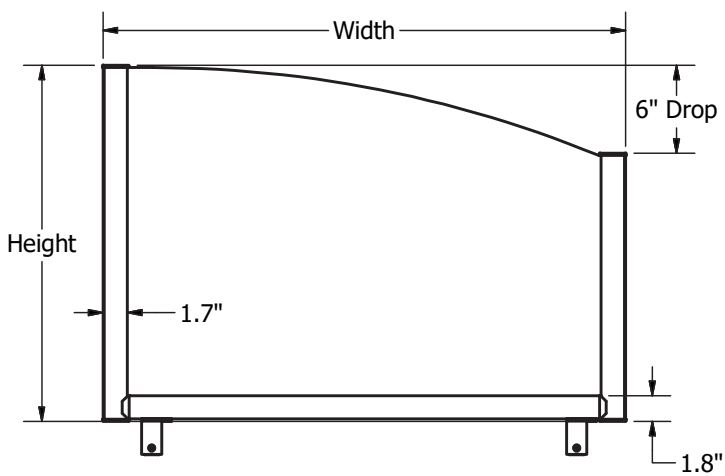
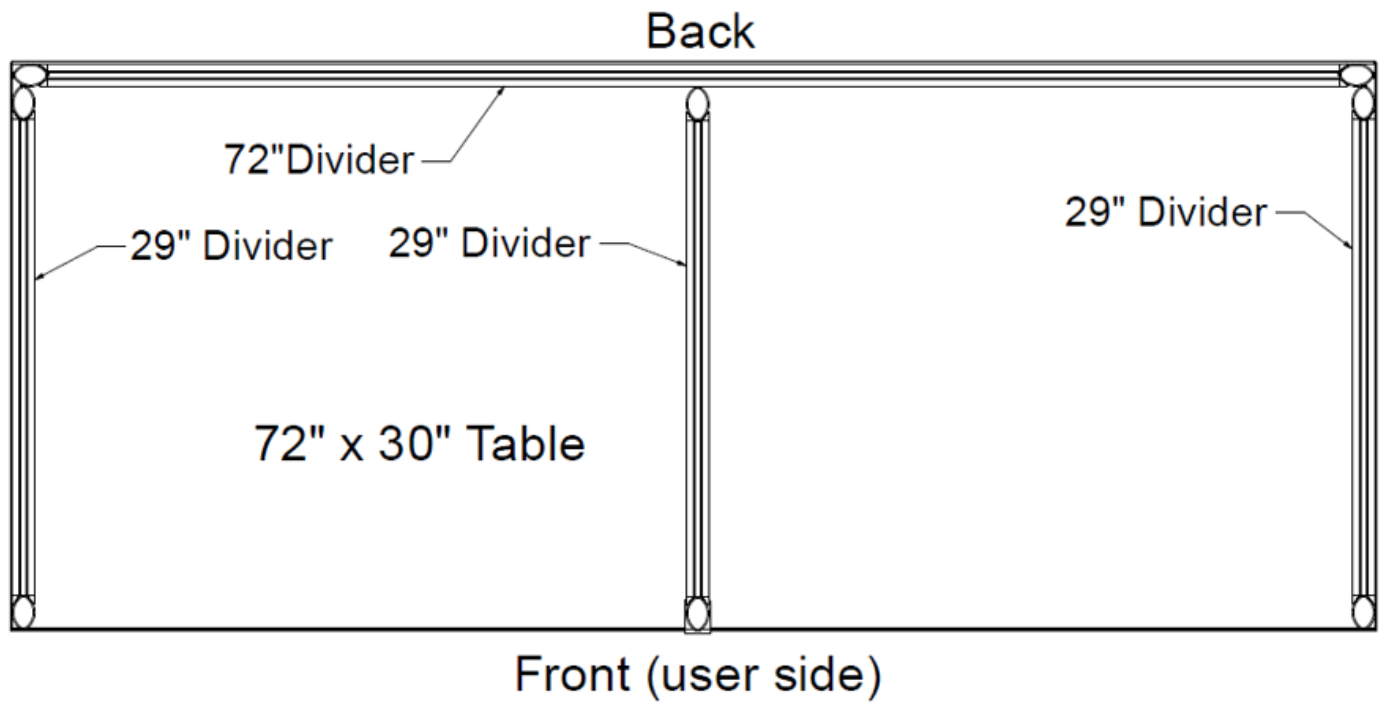
Satin Aluminum  
AA



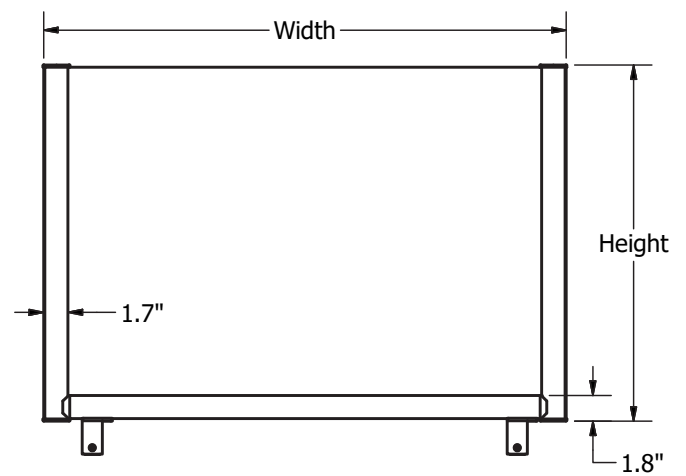
Pewter  
20



Black  
BK



ARCED WING  
(TTA)



LINEAR WING  
(TTL)