

TABLEUP™ HEIGHT ADJUSTABLE BASE - 2 LEGS AND WORKSURFACES

Price Effective - September 19, 2022



ELECTRIC HEIGHT ADJUSTABLE

TableUP, our US made height adjustable table bases deliver quality, flexibility, and functionality at an affordable cost. Built to exceed industry standards and configured to meet your budget, TableUP bases are the foundation for a healthy and ergonomic workspace.



- 2-Stage height adjustment range – 27" to 46" (excluding worksurface)
- 3-Stage extended height adjustment range – 21.5" to 47.5" (excluding worksurface)
- Meets California freestanding height adjustable table requirements
- 2-Leg base supports 200lb lifting capacity
- Ergonomically designed to allow for under-mount keyboard drawer installation
- Programmable or up/down hand set available
- Powered by built-in motors in each leg for a smooth and quiet motion
- Lifting and lowering speed - 1.25" per second
- Meets BIFMA X5.5 standards, UL 962 approved
- Base finish options - Silver, Black and White

WORKSURFACE AVAILABLE SEPARATELY

- Minimum Order Quantity of 4 Worksurfaces
- Top size: 24" – 30" depth, 48" – 84" width
- High Pressure Laminate (HPL) worksurface with coordinating or solid 3mm edgeband available
- Predrilled grommet hole with coordinating grommet available in various locations on worksurfaces

TABLEUP™ ELECTRIC HEIGHT ADJUSTABLE BASE - 2 LEGS

How to build your SKU:

Step 1:
Choose your
Model

TU2-2

Step 2:
Choose your
Hand Control

U-T

Step 3:
Choose your
Base Color

SV

HEIGHT ADJUSTABLE BASE - 2 LEGS

Model	Handset Control	Base Color
TU2-2 TableUP™ 2-Stage	U-T Up/Down -Touch	SV Silver
TU2-3 TableUP™ 3-Stage	P-T Programmable Control	WT White
		BK Black

HEIGHT ADJUSTABLE BASE - 2 LEGS

Model #	Base	Stage	Hand Set	Weight	List Price
TU2-2U-T	2 Legs	2-Stage	Up/Down Hand Set	45 lbs.	\$1,111
TU2-2P-T	2 Legs	2-Stage	Programmable Hand Set	45 lbs.	\$1,281
TU2-3U-T	2 Legs	3-Stage	Up/Down Hand Set	50 lbs.	\$1,294
TU2-3P-T	2 Legs	3-Stage	Programmable Hand Set	50 lbs.	\$1,464



TU2-2 TABLEUP™
2-STAGE HEIGHT ADJUSTABLE BASE

2-Stage height adjustment range - 27" to 46" and 200lb lifting capacity
 3-Stage extended height adjustment range - 21.5" to 47.5" and 250lb lifting capacity
 Meets CA freestanding height adjustment table requirements
 Pricing in USD



Up/Down Hand Set



Programmable Hand Set



TU2-3 TABLEUP™
3-STAGE EXTENDED HEIGHT
ADJUSTABLE BASE

WORKSURFACES

MergeWorks' worksurfaces are made from High Pressure Laminate (HPL) with a coordinating or solid color 3mm edge band. Extremely functional, versatile and durable HPL worksurfaces are scratch, water and impact resistant.

How to build your SKU:

Step 1:
Choose your
Worksurface

WS-7224

Step 2:
Choose your
Laminate Color

L110

Step 3:
Choose your
Edgeband

EM

Step 4:
Choose your
Grommet Location

C

Step 5:
Choose your
Grommet Color

GB

*Step 6:
Choose your options
Anti-Sag Bar

HL

*(Recommended for worksurfaces 60" or wider)

TABLEUP™ WORKSURFACES

Rectangular Worksurface	Laminate Color	Edgeband	Grommet Location	Grommet Color	Recommended Anti-Sag Bar (Optional)
WS-4824 48"w x 24"d	L1__ Standard Laminate	EM Matching	N No Grommet	GS Silver	VL V-Channel for worksurfaces 60"-72"
WS-4830 48"w x 30"d	L3__ Premium Laminate	EP Multi-plywood	L Left	GB Black	HL Hat-Channel for worksurfaces 72"-84"
WS-5424 54"w x 24"d		ES Silver	C Center	GW White	
WS-5430 54"w x 30"d		EB Black	R Right		
WS-6024 60"w x 24"d		EW White	LC Left & Center		
WS-6030 60"w x 30"d			LR Left & Right		
WS-6624 66"w x 24"d			CR Center & Right		
WS-6630 66"w x 30"d			LCR Left, Center & Right		
WS-7224 72"w x 24"d					
WS-7230 72"w x 30"d					
WS-8424 84"w x 24"d					
WS-8430 84"w x 30"d					

MINIMUM ORDER QUANTITY OF 4 WORKSURFACES

RECTANGULAR HPL WORKSURFACE

Model #	Size	L100 Laminates	L300 Laminates	Recommended Anti-Sag Bar
WS-4824	48"w x 24"d	\$440	\$565	-
WS-4830	48"w x 30"d	\$490	\$615	-
WS-5424	54"w x 24"d	\$490	\$630	-
WS-5430	54"w x 30"d	\$545	\$685	-
WS-6024	60"w x 24"d	\$495	\$635	VL - \$75
WS-6030	60"w x 30"d	\$550	\$690	VL - \$75
WS-6624	66"w x 24"d	\$575	\$740	VL - \$75
WS-6630	66"w x 30"d	\$645	\$810	VL - \$75
WS-7224	72"w x 24"d	\$580	\$745	HL - \$88
WS-7230	72"w x 30"d	\$655	\$820	HL - \$88
WS-8424	84"w x 24"d	\$760	\$975	HL - \$88
WS-8430	84"w x 30"d	\$855	\$1,070	HL - \$88

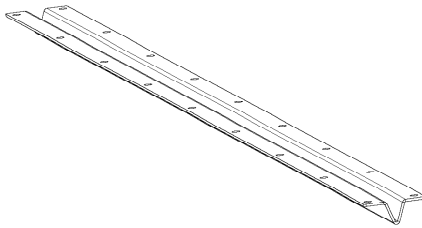


TU2-2 TABLEUP™ 2-STAGE HEIGHT ADJUSTABLE WITH WORKSURFACE



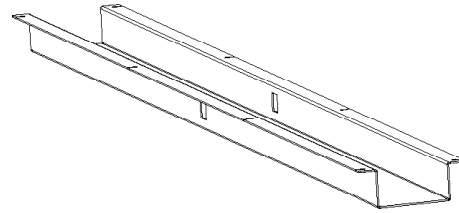
TU2-3 TABLEUP™ 3-STAGE EXTENDED HEIGHT ADJUSTABLE WITH WORKSURFACE

ANTI-SAG BARS



VL - \$75

V-channel for 60"-66" wide worksurfaces

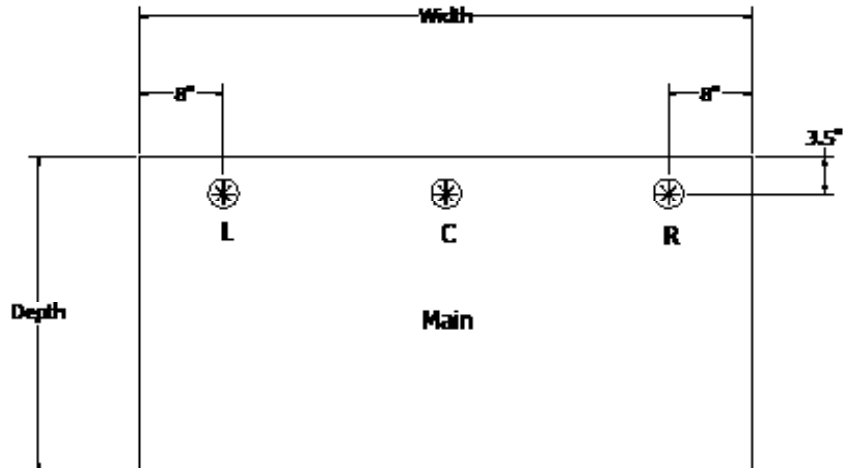


HL - \$88

Hat channel for 72"-84" wide worksurfaces

GROMMET LOCATION

Model #	Location & Qty	Price
N	No Grommet	\$0
L	Left (1)	\$25
C	Center (1)	\$25
R	Right (1)	\$25
LC	Left & Center (2)	\$50
LR	Left & Right (2)	\$50
CR	Center & Right (2)	\$50
LCR	Left, Center & Right (3)	\$75



GROMMET LOCATIONS

MINIMUM ORDER QUANTITY OF 4 WORKSURFACES

Pricing in USD

MATERIAL OPTIONS

LAMINATES AND WOODGRAINS HPL 100 SERIES



Phantom Ecu
L100



New Age Oak
L102



Black Walnut
L104



Bleached Legno
L105



Smokey Brown Pear
L106



Cafelle
L107



Blackened Legno
L108



Brite White
L109



Folkstone
L110



Huntington Maple
L118



Asian Night
L119



Fusion Maple
L120



Grey Elm
L121

LAMINATES AND WOODGRAINS HPL 300 SERIES



Antique Cognac Pine
L300



Recon Olive
L301



Repurposed
Oak Plank
L302



Small Planked
L303



Mocha Olive
L304



Lost Pine
L305



Antique Barrel
L306

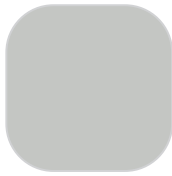


Reclaimed
Oak Plank
L307

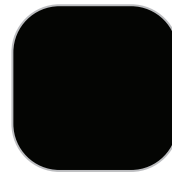
BASE FINISHES, GROMMET FINISHES, EDGE BAND FINISHES



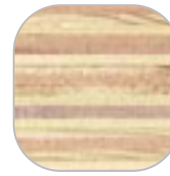
White
WT



Silver
SV



Black
BK



Multi-plywood
(Edgeband only)

MINIMUM ORDER QUANTITY OF 4 WORKSURFACES