

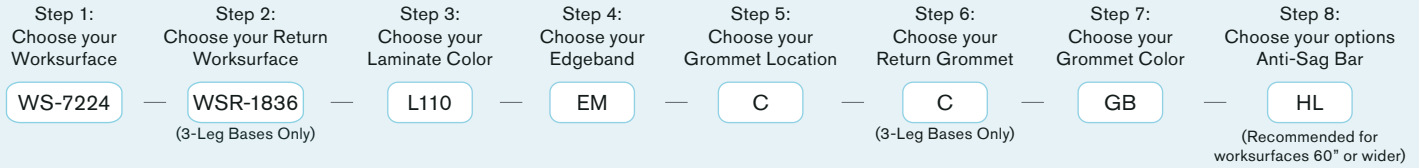
# WORKSURFACES

Price Effective - September 19, 2022

## Minimum Order Quantity (4)

MergeWorks' worksurfaces are made from High Pressure Laminate (HPL) with a coordinating or solid color 3mm edge band. Extremely functional, versatile and durable HPL worksurfaces are scratch, water and impact resistant.

### How to build your SKU:



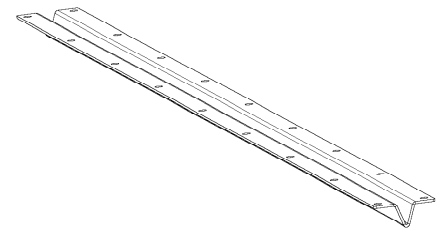
## TABLEUP™ WORKSURFACE

Rectangular Worksurface	Return Worksurface	Laminate Color	Edgeband	Grommet Location	Return Grommet	Grommet Color	Recommended Anti-Sag Bar (Optional)
WS-4824 48"w x 24"d	WSR-1836 18"w x 36"d	L1__ Standard Laminate	EM Matching	N No Grommet	N No Grommet	GS Silver	VL V-Channel for worksurfaces 60"-66"
WS-4830 48"w x 30"d	WSR-1842 18"w x 42"d	L3__ Premium Laminate	EP Multi-plywood	L Left	L Left	GB Black	HL Hat-Channel for worksurfaces 72"-84"
WS-5424 54"w x 24"d	WSR-1848 18"w x 48"d		ES Silver	C Center	C Center	GW White	
WS-5430 54"w x 30"d	WSR-2436 24"w x 36"d		EB Black	R Right	R Right		
WS-6024 60"w x 24"d	WSR-2442 24"w x 42"d		EW White	LC Left & Center			
WS-6030 60"w x 30"d	WSR-2448 24"w x 48"d			LR Left & Right			
WS-6624 66"w x 24"d	WSR-3036 30"w x 36"d			CR Center & Right			
WS-6630 66"w x 30"d	WSR-3042 30"w x 42"d			LCR Left, Center & Right			
WS-7224 72"w x 24"d	WSR-3048 30"w x 48"d						
WS-7230 72"w x 30"d							
WS-8424 84"w x 24"d							
WS-8430 84"w x 30"d							

## RECTANGULAR HPL WORKSURFACE

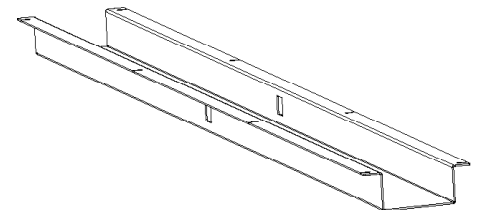
Model #	Size	L100 Laminates	L300 Laminates	Recommended Anti-Sag Bar
WS-4824	48"w x 24"d	\$440	\$565	-
WS-4830	48"w x 30"d	\$490	\$615	-
WS-5424	54"w x 24"d	\$490	\$630	-
WS-5430	54"w x 30"d	\$545	\$685	-
WS-6024	60"w x 24"d	\$495	\$635	VL - \$75
WS-6030	60"w x 30"d	\$550	\$690	VL - \$75
WS-6624	66"w x 24"d	\$575	\$740	VL - \$75
WS-6630	66"w x 30"d	\$645	\$810	VL - \$75
WS-7224	72"w x 24"d	\$580	\$745	HL - \$88
WS-7230	72"w x 30"d	\$655	\$820	HL - \$88
WS-8424	84"w x 24"d	\$760	\$975	HL - \$88
WS-8430	84"w x 30"d	\$855	\$1,070	HL - \$88

## ANTI-SAG BARS



VL - \$75

V-channel for 60"-66" wide worksurfaces



HL - \$88

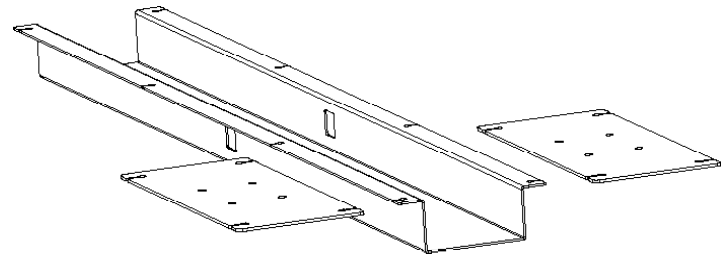
Hat channel for 72"-84" wide worksurfaces

Note:  
Pricing in USD

MINIMUM ORDER QUANTITY OF 4 WORKSURFACES

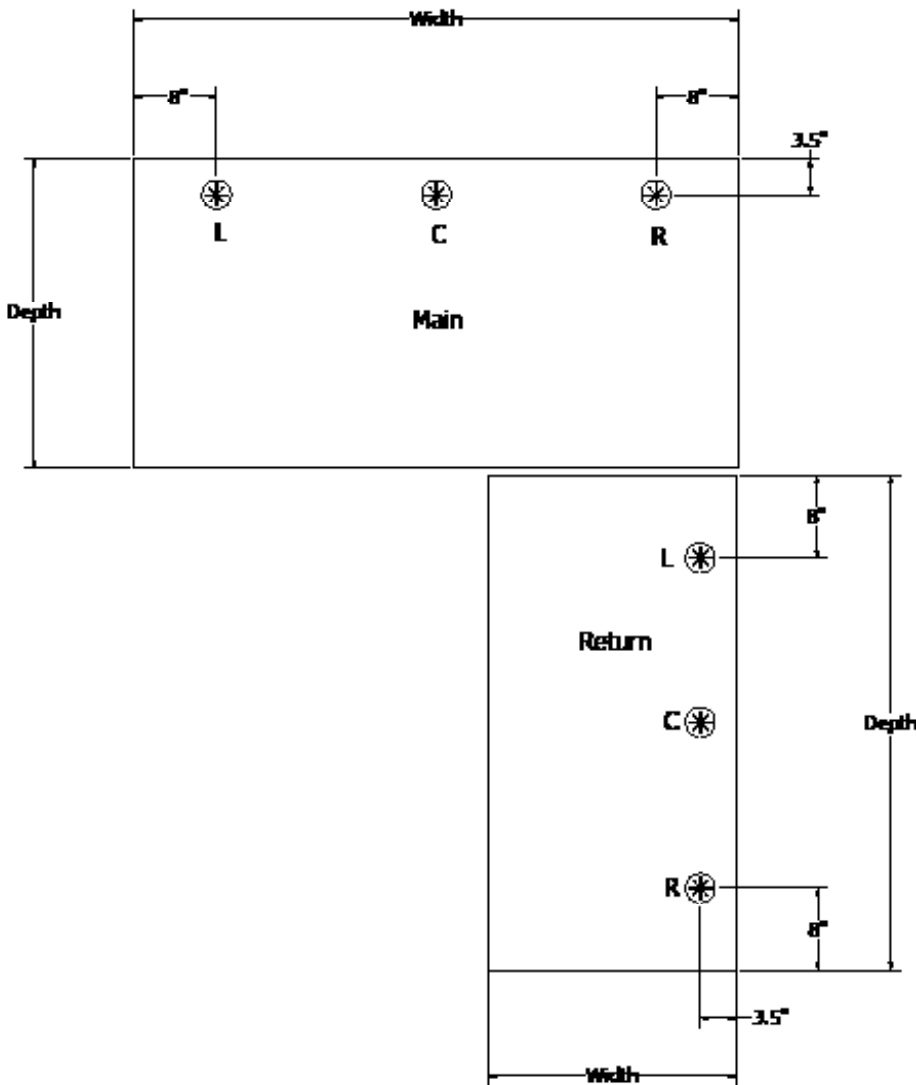
## RETURN WORKSURFACE\*

Model #	Size	L100 Laminates	L300 Laminates
WSR-1836	18"w x 36"d *	\$667	\$797
WSR-1842	18"w x 42"d *	\$667	\$797
WSR-1848	18"w x 48"d *	\$667	\$797
WSR-2436	24"w x 36"d *	\$667	\$797
WSR-2442	24"w x 42"d *	\$667	\$797
WSR-2448	24"w x 48"d *	\$667	\$797
WSR-3036	30"w x 36"d *	\$727	\$872
WSR-3042	30"w x 42"d *	\$727	\$872
WSR-3048	30"w x 48"d *	\$727	\$872



RT

\*Return worksurface connector hardware (included)



### GROMMET LOCATION - MAIN WORKSURFACE

Model #	Location & Qty	Price
N	No Grommet	\$0
L	Left (1)	\$25
C	Center (1)	\$25
R	Right (1)	\$25
LC	Left & Center (2)	\$50
LR	Left & Right (2)	\$50
CR	Center & Right (2)	\$50
LCR	Left, Center & Right (3)	\$75

### GROMMET LOCATION - RETURN WORKSURFACE

Model #	Location & Qty	Price
N	No Grommet	\$0
L	Left (1)	\$25
C	Center (1)	\$25
R	Right (1)	\$25

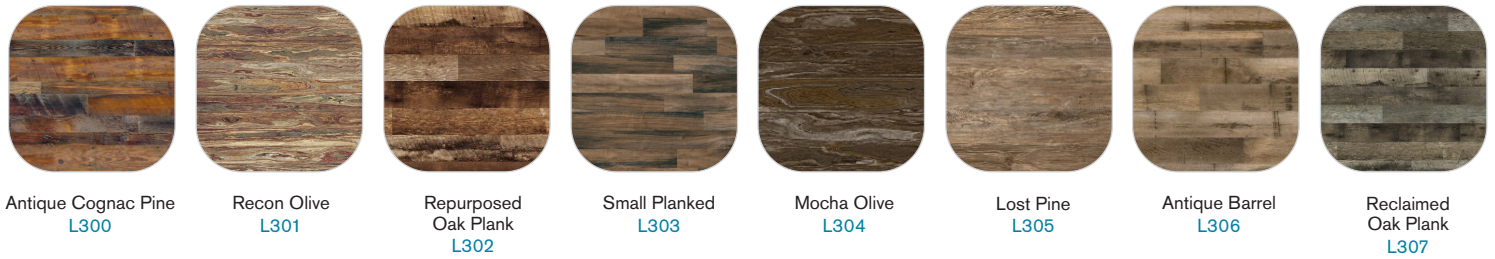
Note:  
Pricing in USD

MINIMUM ORDER QUANTITY OF 4 WORKSURFACES

## LAMINATES AND WOODGRAINS HPL SERIES 100 (L1\_)



## LAMINATES AND WOODGRAINS HPL SERIES 300 (L3\_)



## BASE FINISHES, GROMMET FINISHES, EDGE BAND FINISHES

