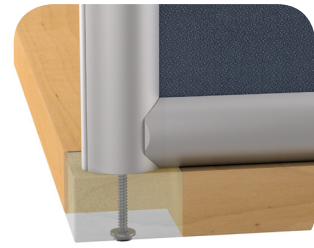


TERRACE™ PANEL

FRAMED DESK DIVIDER MOUNTING OPTIONS

Bolt Through (B)

- Cost Effective
- Clean Look
- Permanent Mounting (requires drilling in worksurface)
- Locate anywhere on the desk
- Works on all thickness tops

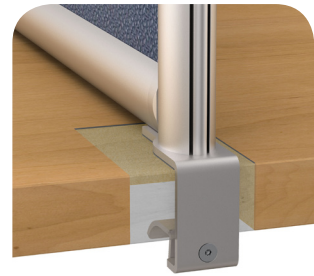


Bolt Through (B)

Middle Clamp (CM)

- Patented Lever allows for easy installation with no low hanging knob
- Fast & easy installation and relocation
- Mount perpendicular to edge of work surface
- Clamp fits 5/8" to 2" thick tops
- No screwing or drilling into worksurface required
- Only one clamp required to secure a desk divider

**Patented*

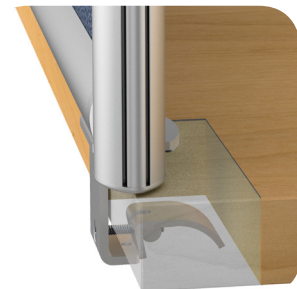


Middle Clamp (CM)

Edge Clamp (CE)

- Patented Lever allows for easy installation with no low hanging knob
- Fast & easy installation and relocation
- Mount along the edge of work surface
- Clamp fits 5/8" to 2" thick tops
- No screwing or drilling into worksurface required
- Clamp position is adjustable
- Kits include 2 or 3 Clamps depending on the width of the desk divider

**Patented*



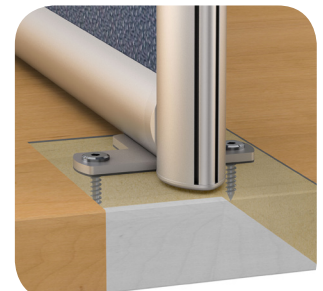
Edge Clamp (CE)

Top Plate (T)

- Use for freestanding or permanent mounting
- Locate anywhere on the desk
- Works on all thickness tops
- Top Plate rotates for single or double sided attachment
- Top Plate positions are adjustable
- Can be used to span two tables
- Kits include 2 or 3 Top Plates depending on the width of the desk divider



Top Plate Single (T)



Top Plate Double (T)