

TABLEUP™ BENCHING 2-LEG

Price Effective - January 1, 2021

TableUP™ height adjustable benching system offers quality space-saving and ergonomic workstations at an affordable cost. Built to exceed industry standards, the TableUP back-to-back, electric sit/stand benching system is attractive and highly functional while maximizing space in offices, hospitals, and classrooms.



- 2-Leg bases support 48" to 72" wide worksurfaces
- Base depth: 29" and 35" (supports 24" and 30" worksurfaces)
- Base height: Fixed Height: 27.75" (with 1.25" worksurface)
 - 2-Stage Electric: 27.75"-46.75" (with 1.25" worksurface), stroke length 19"
 - 3-Stage Electric: 22.25"-48.25" (with 1.25" worksurface), stroke length 26"
- Maximum load – 200lbs including worksurface
- Programmable or up/down hand set button available
- Powered by built-in motors in each leg for a smooth and quiet motion
- Lifting and lowering speed- 1.25" per second
- Includes center tray, support and tray covers
- Optional electrical base infeed starter cables and interconnecting cables
- Meets BIFMA X5.4 standards
- Base Finish options - Silver, Black and White
- 4-week lead time on all Benching systems

WORKSURFACE

- Top size: 24" – 30" depth, 48" – 72" width
- High Pressure Laminate (HPL) worksurface with coordinating or solid 3mm edgeband available
- Predrilled grommet hole with grommets available in various locations on worksurfaces

CENTER DESK DIVIDER

- Benching system includes center rail for easy and secure panel installation
- Panels available in Frosted Acrylic, Fabric Fold and EchoScape™ materials
- Panel heights 24" and 30"

How to build your SKU:

Step 1: Choose your Model	Step 2: Choose your Qty of Workstations	Step 3: Choose your Work Station Size	Step 4: Choose your Stage and Hand Switch	Step 5: Choose your Power Kit	Step 6: Choose your Base Color
TUB2	2	5430	2U	P	WT

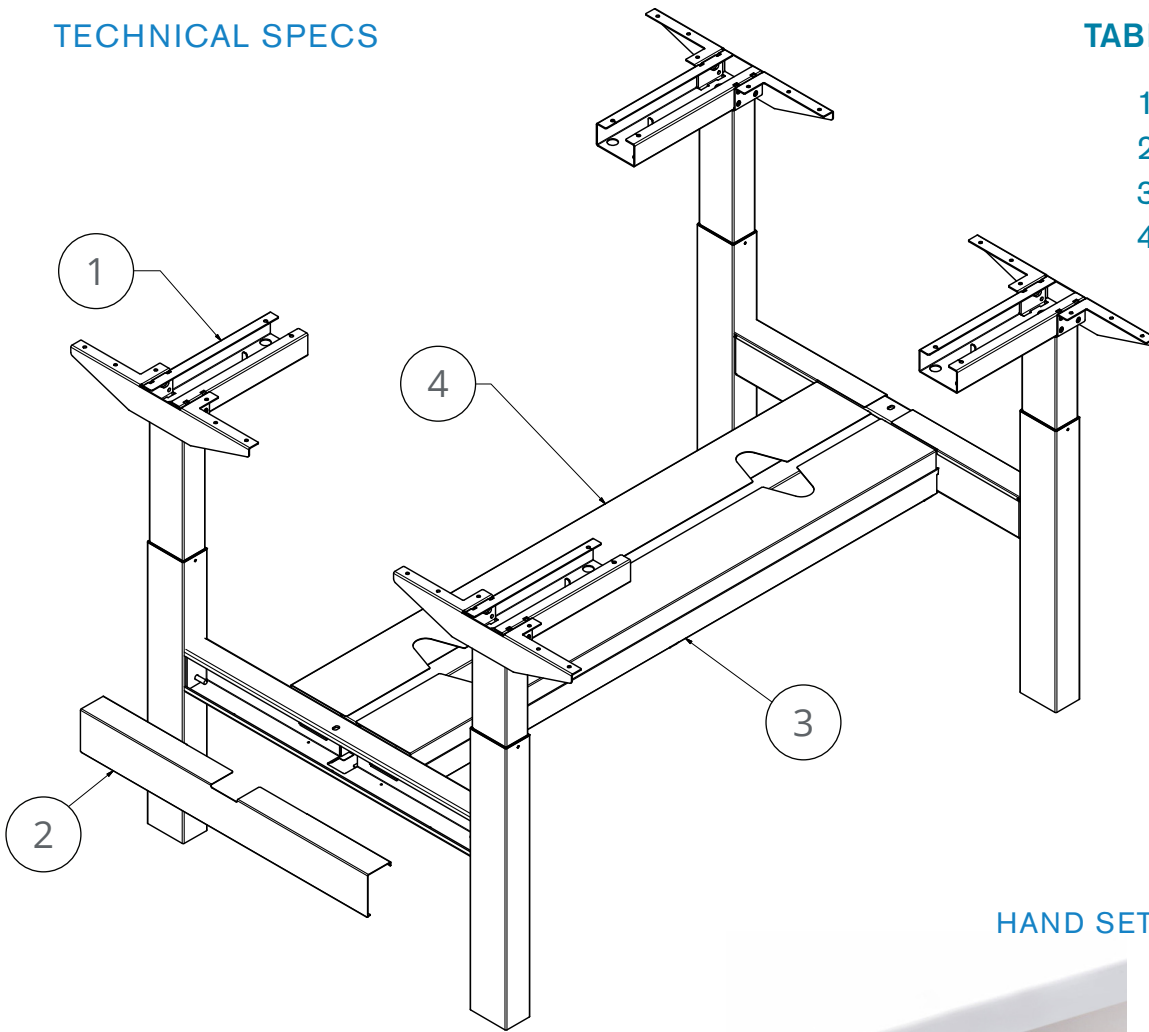
BENCHING SYSTEM

Model	Qty of Workstations	Workstation Size	Stage and Hand Switch	Power Kit	Base Color
TUB2 Benching System	2 2 Pack Back-to-Back	4824 4830 5424 5430 6024 6030 6624 6630 7224 7230	F Fixed - No Height Adjustment 2U 2-Stage, Up/Down Switch 2P 2-Stage, Programmable Switch 3U 3-Stage, Up/Down Switch 3P 3-Stage, Programmable Switch	N No Power P Power Receptacle	BK Black WT White SV Silver

TECHNICAL SPECS

TABLEUP BENCHING SYSTEM

1. Interdependent E-Beam
2. End Covers
3. Center Tray Support
4. Tray Covers



HAND SET OPTIONS



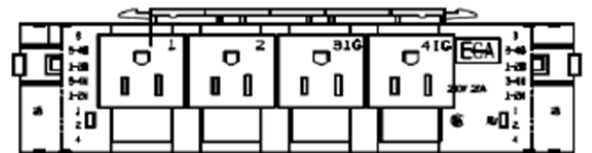
Up/Down Hand Set



Programmable Hand Set

ELECTRICAL BASE INFEEED POWER AND CABLE

- 8-Wire 4 Circuit (3+1)
- All circuits rated for 20 amps
- Double sides power blocks run on 8 wire systems
- UL/ETL listed for US and Canada
- Qty (1) RECPT and cable per back-to-back station
- Up to 4 back-to-back stations (8 worksurfaces) per Base Infeed



DOUBLE-SIDED, 4 RECPT
TYPE AA

BENCHING SYSTEM (2-LEG BASE)

Base with
Fixed Legs

Model	Qty of Stations	Work Station Size	Starting Price Fixed Height (F)	2 Stage Up/Down Handset (2U)	2 Stage Programmable Handset (2P)	3 Stage Up/Down Handset (3U)	3 Stage Programmable Handset (3P)	Power Receptacle
TUB2	2	4824	\$1,030	+\$1,130	+\$1,310	+\$1,350	+\$1,530	+\$340
TUB2	2	4830	\$1,030	+\$1,130	+\$1,310	+\$1,350	+\$1,530	+\$340
TUB2	2	5424	\$1,030	+\$1,130	+\$1,310	+\$1,350	+\$1,530	+\$340
TUB2	2	5430	\$1,030	+\$1,130	+\$1,310	+\$1,350	+\$1,530	+\$340
TUB2	2	6024	\$1,050	+\$1,130	+\$1,310	+\$1,350	+\$1,530	+\$340
TUB2	2	6030	\$1,050	+\$1,130	+\$1,310	+\$1,350	+\$1,530	+\$340
TUB2	2	6624	\$1,050	+\$1,130	+\$1,310	+\$1,350	+\$1,530	+\$340
TUB2	2	6630	\$1,050	+\$1,130	+\$1,310	+\$1,350	+\$1,530	+\$340
TUB2	2	7224	\$1,200	+\$1,130	+\$1,310	+\$1,350	+\$1,530	+\$340
TUB2	2	7230	\$1,200	+\$1,130	+\$1,310	+\$1,350	+\$1,530	+\$340

Pricing in USD



TUB2-2 TABLEUP™
QTY 2
BENCHING SYSTEM
3-STAGE HEIGHT ADJUSTABLE

BENCHING WORKSURFACES

MergeWorks' worksurfaces are made from High Pressure Laminate (HPL) with a coordinating or solid color 3mm edge band. Extremely functional, versatile and durable HPL worksurfaces are scratch, water and impact resistant.

How to build your SKU:

Step 1:
Choose your
Worksurface

Step 2:
Choose your
Laminate Color

Step 3:
Choose your
Edgeband

Step 4:
Choose your
Grommet Location

Step 5:
Choose your
Grommet Color

Step 6:
Choose your options
Anti-Sag Bar

WSBM-7224

—

L110

—

EM

—

C

—

GB

—

HL

(Recommended for worksurfaces 60" or wider)

BENCHING RECTANGULAR WORKSURFACE

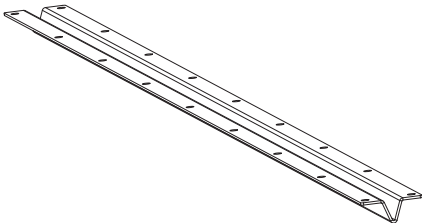
Model #	Worksurface Size	Laminate Color	Edgeband	Grommet Location	Grommet Color	Recommended Anti-Sag Bar (Optional)
WSBM-4824	46.5"w x 24"d	L1 Standard Laminate	EM Matching	N No Grommet	GS Silver	VL V-Channel for worksurfaces 60"-66"
WSBM-4830	46.5"w x 30"d	L3 Premium Laminate	EP Multi-plywood	L Left	GB Black	HL Hat-Channel for worksurfaces 72"
WSBM-5424	52.5"w x 24"d		ES Silver	C Center	GW White	
WSBM-5430	52.5"w x 30"d		EB Black	R Right		
WSBM-6024	58.5"w x 24"d		EW White	LC Left & Center		
WSBM-6030	58.5"w x 30"d			LR Left & Right		
WSBM-6624	64.5"w x 24"d			CR Center & Right		
WSBM-6630	64.5"w x 30"d			LCR Left, Center & Right		
WSBM-7224	70.5"w x 24"d					
WSBM-7230	70.5"w x 30"d					

RECTANGULAR HPL WORKSURFACE (2 PACK)

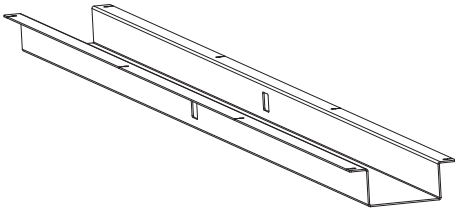
Model #	Worksurface Size	L100 Laminates	L300 Laminates	Recommended Anti-Sag Bar
WSBM-4824	46.5"w x 24"d	\$610	\$756	-
WSBM-4830	46.5"w x 30"d	\$726	\$872	-
WSBM-5424	52.5"w x 24"d	\$714	\$904	-
WSBM-5430	52.5"w x 30"d	\$852	\$1,042	-
WSBM-6024	58.5"w x 24"d	\$746	\$946	VL - \$90
WSBM-6030	58.5"w x 30"d	\$882	\$1,082	VL - \$90
WSBM-6624	64.5"w x 24"d	\$946	\$1,176	VL - \$90
WSBM-6630	64.5"w x 30"d	\$1,008	\$1,238	VL - \$90
WSBM-7224	70.5"w x 24"d	\$978	\$1,208	HL - \$150
WSBM-7230	70.5"w x 30"d	\$1,040	\$1,270	HL - \$150

Pricing in USD

ANTI-SAG BARS



V-channel for 60"-66" wide worksurfaces



Hat channel for 72" wide worksurfaces

BENCHING WORKSURFACES

GROMMET LOCATION (2 PACK)

Model #	Location & Qty	Price
N	No Grommet	\$0
L	Left (1)	\$50
C	Center (1)	\$50
R	Right (1)	\$50
LC	Left & Center (2)	\$100
LR	Left & Right (2)	\$100
CR	Center & Right (2)	\$100
LCR	Left, Center & Right (3)	\$150

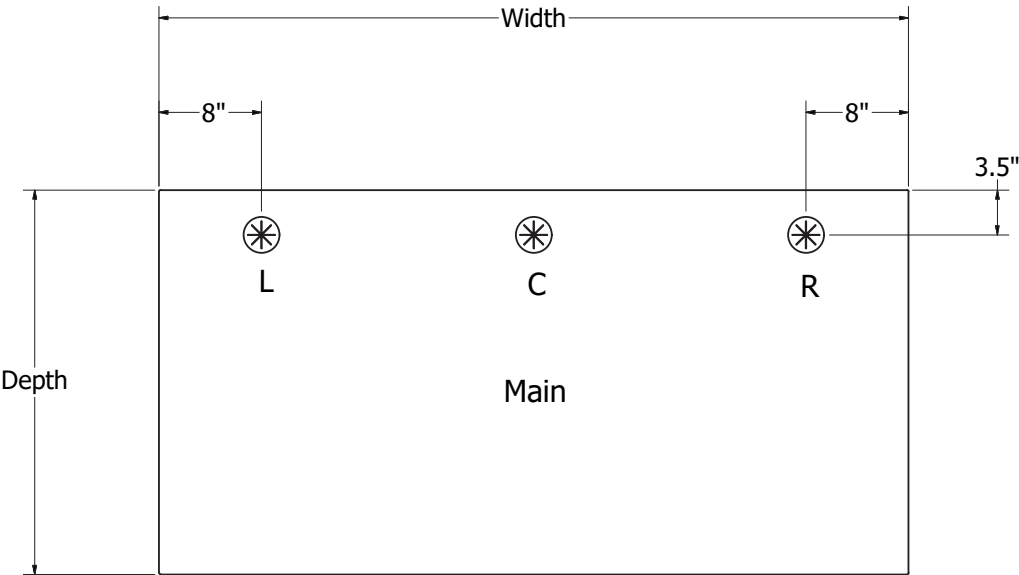
Pricing in USD



TUB2-2 TABLEUP™
QTY 4
BENCHING SYSTEM
2-STAGE HEIGHT ADJUSTABLE



TUB2-2 TABLEUP™
QTY 3
BENCHING SYSTEM
3-STAGE HEIGHT ADJUSTABLE



GROMMET LOCATIONS

BENCHING CENTER DESK DIVIDER



Add privacy with center desk dividers that mount directly to the TableUP™ benching system.

Benching system includes divider center rail for convenient and seamless divider installation.

How to build your SKU:

Step 1:
Choose your Model

TUBD

—

Step 2:
Choose your Style

FF

—

Step 3:
Choose your Width

54

—

Step 4:
Choose your Height

2416

—

Step 5:
Choose your Material Color

F109

BENCHING CENTER DESK DIVIDER

Model	Style	Width	Height	Material Color
TUBD TableUP™ Benching Center Divider	FRO Frosted Acrylic	48"	24" Overall, 16" above desk at seated position*	P1_ EchoScape™
	FF Fabric Fold	54"		FRO Frosted Acrylic
	PE18 EchoScape™ 3/4" (18mm)	60"	30" Overall, 22" above desk at seated position*	F1_ Fabric Series 100
		66"		F2_ Fabric Series 200
		72"		

* Divider panels are stationary and do not raise or lower with workstation

PRICE INCLUDES MOUNTING HARDWARE

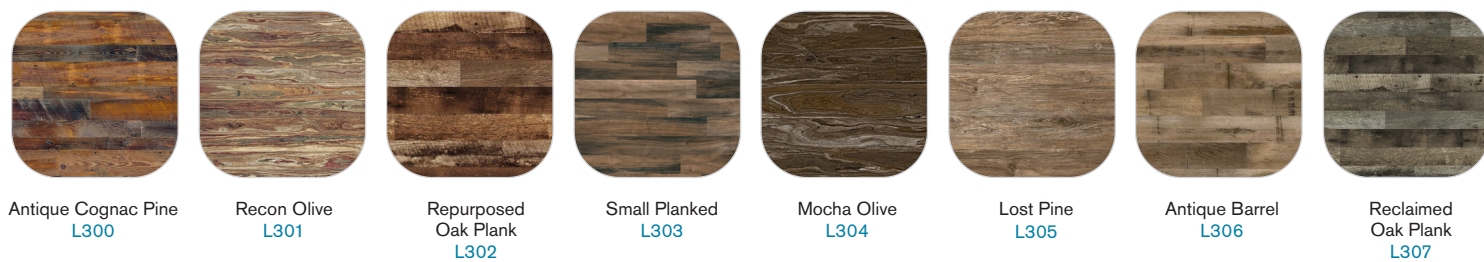
Width	Overall Panel Height	Height Above Seated Position*	EchoScape™ 3/4" (18mm)	Frosted Acrylic	Fabric Fold 100 Series	Fabric Fold 200 Series
48"	24"	16"	\$400	\$441	\$504	\$552
48"	30"	22"	\$415	\$494	\$630	\$730
54"	24"	16"	\$415	\$452	\$531	\$583
54"	30"	22"	\$470	\$499	\$678	\$783
60"	24"	16"	\$440	\$473	\$594	\$657
60"	30"	22"	\$500	\$657	\$846	\$972
66"	24"	16"	\$455	\$573	\$699	\$767
66"	30"	22"	\$515	\$662	\$1,040	\$1,176
72"	24"	16"	\$600	\$578	\$725	\$804
72"	30"	22"	\$615	\$672	\$1,082	\$1,234

Pricing in USD

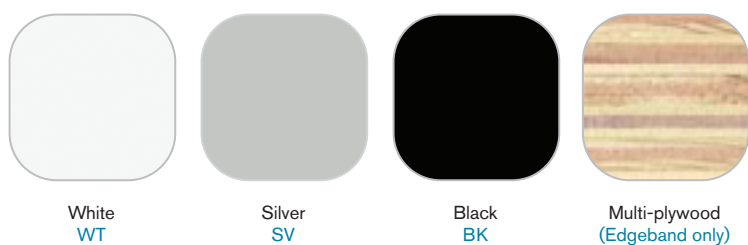
LAMINATES AND WOODGRAINS HPL SERIES 100 (L1_)



LAMINATES AND WOODGRAINS HPL SERIES 300 (L3_)



GROMMET FINISHES, EDGE BAND FINISHES

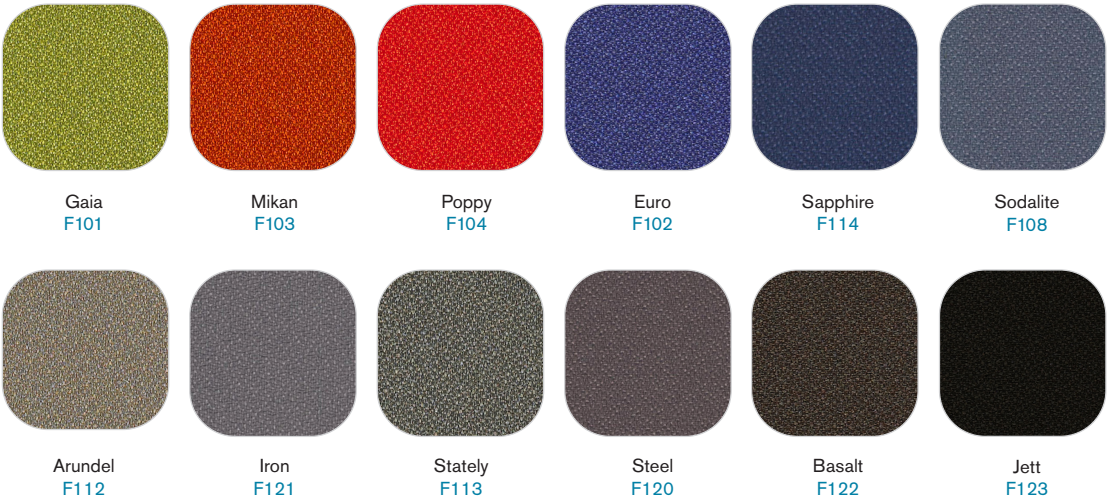


DESK DIVIDER CORE MATERIALS

ECHOSCAPE™ 3/4" (18MM) (P1_)



FABRIC SERIES 100 (F1_)



FABRIC SERIES 200 (F2_)

